

**TKTL2 Antibody (N-term)**  
**Affinity Purified Rabbit Polyclonal Antibody (Pab)**  
**Catalog # AP17357a****Specification**

---

**TKTL2 Antibody (N-term) - Product Information**

Application	WB,E
Primary Accession	<a href="#">O9H0I9</a>
Other Accession	<a href="#">NP_115512.3</a>
Reactivity	Human
Host	Rabbit
Clonality	Polyclonal
Isotype	Rabbit IgG
Calculated MW	67877
Antigen Region	43-71

**TKTL2 Antibody (N-term) - Additional Information****Gene ID** 84076**Other Names**

Transketolase-like protein 2, TKTL2

**Target/Specificity**

This TKTL2 antibody is generated from rabbits immunized with a KLH conjugated synthetic peptide between 43-71 amino acids from the N-terminal region of human TKTL2.

**Dilution**

WB~~1:1000

**Format**

Purified polyclonal antibody supplied in PBS with 0.09% (W/V) sodium azide. This antibody is purified through a protein A column, followed by peptide affinity purification.

**Storage**

Maintain refrigerated at 2-8°C for up to 2 weeks. For long term storage store at -20°C in small aliquots to prevent freeze-thaw cycles.

**Precautions**

TKTL2 Antibody (N-term) is for research use only and not for use in diagnostic or therapeutic procedures.

**TKTL2 Antibody (N-term) - Protein Information****Name** TKTL2

**Function** Plays an essential role in total transketolase activity and cell proliferation in cancer cells; after transfection with anti-TKTL1 siRNA, total transketolase activity dramatically decreases and

proliferation was significantly inhibited in cancer cells. Plays a pivotal role in carcinogenesis.

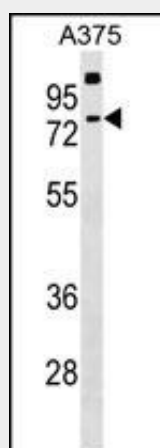
**Tissue Location**

Overexpressed in hepatoma cancer cells.

**TKTL2 Antibody (N-term) - Protocols**

Provided below are standard protocols that you may find useful for product applications.

- [Western Blot](#)
- [Blocking Peptides](#)
- [Dot Blot](#)
- [Immunohistochemistry](#)
- [Immunofluorescence](#)
- [Immunoprecipitation](#)
- [Flow Cytometry](#)
- [Cell Culture](#)

**TKTL2 Antibody (N-term) - Images**

TKTL2 Antibody (N-term) (Cat. #AP17357a) western blot analysis in A375 cell line lysates (35ug/lane). This demonstrates the TKTL2 antibody detected the TKTL2 protein (arrow).

**TKTL2 Antibody (N-term) - Background**

TKTL2 plays an essential role in total transketolase activity and cell proliferation in cancer cells; after transfection with anti-TKTL1 siRNA, total transketolase activity dramatically decreases and proliferation was significantly inhibited in cancer cells. Play a pivotal role in carcinogenesis.

**TKTL2 Antibody (N-term) - References**

Simpson, J.C., et al. EMBO Rep. 1(3):287-292(2000)