

**SAFB Antibody (N-term)**  
**Affinity Purified Rabbit Polyclonal Antibody (Pab)**  
**Catalog # AP17362A****Specification**

---

**SAFB Antibody (N-term) - Product Information**

Application	WB,E
Primary Accession	<a href="#">Q15424</a>
Other Accession	<a href="#">NP_002958.2</a>
Reactivity	Human
Host	Rabbit
Clonality	Polyclonal
Isotype	Rabbit IgG
Calculated MW	102642
Antigen Region	65-94

**SAFB Antibody (N-term) - Additional Information****Gene ID** 6294**Other Names**

Scaffold attachment factor B1, SAF-B, SAF-B1, HSP27 estrogen response element-TATA box-binding protein, HSP27 ERE-TATA-binding protein, SAFB, HAP, HET, SAFB1

**Target/Specificity**

This SAFB antibody is generated from rabbits immunized with a KLH conjugated synthetic peptide between 65-94 amino acids from the N-terminal region of human SAFB.

**Dilution**

WB~~1:1000

E~~Use at an assay dependent concentration.

**Format**

Purified polyclonal antibody supplied in PBS with 0.09% (W/V) sodium azide. This antibody is purified through a protein A column, followed by peptide affinity purification.

**Storage**

Maintain refrigerated at 2-8°C for up to 2 weeks. For long term storage store at -20°C in small aliquots to prevent freeze-thaw cycles.

**Precautions**

SAFB Antibody (N-term) is for research use only and not for use in diagnostic or therapeutic procedures.

**SAFB Antibody (N-term) - Protein Information****Name** SAFB

**Synonyms** HAP, HET, SAFB1

**Function** Binds to scaffold/matrix attachment region (S/MAR) DNA and forms a molecular assembly point to allow the formation of a 'transcriptosomal' complex (consisting of SR proteins and RNA polymerase II) coupling transcription and RNA processing (PubMed:[9671816](#)). Functions as an estrogen receptor corepressor and can also bind to the HSP27 promoter and decrease its transcription (PubMed:[12660241](#)). Thereby acts as a negative regulator of cell proliferation (PubMed:[12660241](#)). When associated with RBMX, binds to and stimulates transcription from the SREBF1 promoter (By similarity).

**Cellular Location**

Nucleus

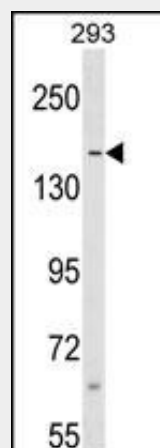
**Tissue Location**

Ubiquitous. Expressed at high levels in the CNS and at low levels in the liver. Expressed in a wide number of breast cancer cell lines

**SAFB Antibody (N-term) - Protocols**

Provided below are standard protocols that you may find useful for product applications.

- [Western Blot](#)
- [Blocking Peptides](#)
- [Dot Blot](#)
- [Immunohistochemistry](#)
- [Immunofluorescence](#)
- [Immunoprecipitation](#)
- [Flow Cytometry](#)
- [Cell Culture](#)

**SAFB Antibody (N-term) - Images**

SAFB Antibody (N-term) (Cat. #AP17362a) western blot analysis in 293 cell line lysates (35ug/lane). This demonstrates the SAFB antibody detected the SAFB protein (arrow).

**SAFB Antibody (N-term) - Background**

This gene encodes a DNA-binding protein that has high specificity for scaffold or matrix attachment region DNA elements (S/MAR DNA). This protein is thought to be involved in attaching

the base of chromatin loops to the nuclear matrix but there is conflicting evidence as to whether this protein is a component of chromatin or a nuclear matrix protein. Scaffold attachment factors are a specific subset of nuclear matrix proteins (NMP) that specifically bind to S/MAR. This encoded protein is thought to serve as a molecular base to assemble a 'transcriptosome complex' in the vicinity of actively transcribed genes. It is involved in the regulation of the heat shock protein 27 transcription and also can act as an estrogen receptor corepressor. This gene is a candidate gene for breast tumorigenesis.

#### **SAFB Antibody (N-term) - References**

Hammerich-Hille, S., et al. Breast Cancer Res. Treat. 121(2):503-509(2010)  
Hammerich-Hille, S., et al. J. Biol. Chem. 285(6):3608-3616(2010)  
Tsianou, D., et al. FEBS J. 276(18):5212-5227(2009)  
Chen, H., et al. Endocrinology 150(5):2429-2435(2009)  
Bergman, A., et al. BMC Med. Genet. 9, 108 (2008) :