

POMT2 Antibody (C-term)
Affinity Purified Rabbit Polyclonal Antibody (Pab)
Catalog # AP17363B

Specification

POMT2 Antibody (C-term) - Product Information

Application	WB,E
Primary Accession	Q9UKY4
Other Accession	Q8BGQ4 , NP_037514.2
Reactivity	Human
Predicted	Mouse
Host	Rabbit
Clonality	Polyclonal
Isotype	Rabbit IgG
Calculated MW	84214
Antigen Region	540-567

POMT2 Antibody (C-term) - Additional Information

Gene ID 29954

Other Names

Protein O-mannosyl-transferase 2, Dolichyl-phosphate-mannose--protein mannosyltransferase 2, POMT2

Target/Specificity

This POMT2 antibody is generated from rabbits immunized with a KLH conjugated synthetic peptide between 540-567 amino acids from the C-terminal region of human POMT2.

Dilution

WB~~1:1000

Format

Purified polyclonal antibody supplied in PBS with 0.09% (W/V) sodium azide. This antibody is purified through a protein A column, followed by peptide affinity purification.

Storage

Maintain refrigerated at 2-8°C for up to 2 weeks. For long term storage store at -20°C in small aliquots to prevent freeze-thaw cycles.

Precautions

POMT2 Antibody (C-term) is for research use only and not for use in diagnostic or therapeutic procedures.

POMT2 Antibody (C-term) - Protein Information

Name POMT2

Function Transfers mannosyl residues to the hydroxyl group of serine or threonine residues. Coexpression of both POMT1 and POMT2 is necessary for enzyme activity, expression of either POMT1 or POMT2 alone is insufficient (PubMed:[14699049](#), PubMed:[28512129](#)). Essentially dedicated to O-mannosylation of alpha-DAG1 and few other proteins but not of cadherins and protocadherins (PubMed:[28512129](#)).

Cellular Location

Endoplasmic reticulum membrane; Multi-pass membrane protein

Tissue Location

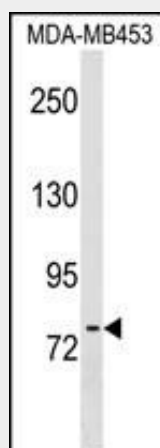
Highly expressed in testis; detected at low levels in most tissues

POMT2 Antibody (C-term) - Protocols

Provided below are standard protocols that you may find useful for product applications.

- [Western Blot](#)
- [Blocking Peptides](#)
- [Dot Blot](#)
- [Immunohistochemistry](#)
- [Immunofluorescence](#)
- [Immunoprecipitation](#)
- [Flow Cytometry](#)
- [Cell Culture](#)

POMT2 Antibody (C-term) - Images



POMT2 Antibody (C-term) (Cat. #AP17363b) western blot analysis in MDA-MB453 cell line lysates (35ug/lane). This demonstrates the POMT2 antibody detected the POMT2 protein (arrow).

POMT2 Antibody (C-term) - Background

The protein encoded by this gene is an O-mannosyltransferase that requires interaction with the product of the POMT1 gene for enzymatic function. The encoded protein is found in the membrane of the endoplasmic reticulum. Defects in this gene are a cause of Walker-Warburg syndrome (WWS).

POMT2 Antibody (C-term) - References

Manya, H., et al. J. Biochem. 147(3):337-344(2010)
Yanagisawa, A., et al. Eur J Med Genet 52(4):201-206(2009)
Murakami, T., et al. Brain Dev. 31(6):465-468(2009)
Mercuri, E., et al. Neurology 72(21):1802-1809(2009)
Messina, S., et al. Neuromuscul. Disord. 18(7):565-571(2008)