

**ZNF322A Antibody (C-term)**  
**Affinity Purified Rabbit Polyclonal Antibody (Pab)**  
**Catalog # AP17366b****Specification**

---

**ZNF322A Antibody (C-term) - Product Information**

Application	WB,E
Primary Accession	<a href="#">Q6U7Q0</a>
Other Accession	<a href="#">Q4R7X8</a> , <a href="#">NP_078915.2</a>
Reactivity	Human
Predicted	Monkey
Host	Rabbit
Clonality	Polyclonal
Isotype	Rabbit IgG
Calculated MW	46941
Antigen Region	326-352

**ZNF322A Antibody (C-term) - Additional Information****Gene ID** 79692**Other Names**

Zinc finger protein 322, Zinc finger protein 322A, Zinc finger protein 388, Zinc finger protein 489, ZNF322, ZNF322A, ZNF388, ZNF489

**Target/Specificity**

This ZNF322A antibody is generated from rabbits immunized with a KLH conjugated synthetic peptide between 326-352 amino acids from the C-terminal region of human ZNF322A.

**Dilution**

WB~~1:1000

E~~Use at an assay dependent concentration.

**Format**

Purified polyclonal antibody supplied in PBS with 0.09% (W/V) sodium azide. This antibody is purified through a protein A column, followed by peptide affinity purification.

**Storage**

Maintain refrigerated at 2-8°C for up to 2 weeks. For long term storage store at -20°C in small aliquots to prevent freeze-thaw cycles.

**Precautions**

ZNF322A Antibody (C-term) is for research use only and not for use in diagnostic or therapeutic procedures.

**ZNF322A Antibody (C-term) - Protein Information****Name** ZNF322

**Synonyms** ZNF322A, ZNF388, ZNF489

**Function** Transcriptional activator (PubMed:[15555580](#)). Important for maintenance of pluripotency in embryonic stem cells (By similarity). Binds directly to the POU5F1 distal enhancer and the NANOG proximal promoter, and enhances expression of both genes (By similarity). Can also bind to numerous other gene promoters and regulates expression of many other pluripotency factors, either directly or indirectly (By similarity). Promotes inhibition of MAPK signaling during embryonic stem cell differentiation (By similarity).

**Cellular Location**

Cytoplasm. Nucleus. Note=Mainly found in the nucleus

**Tissue Location**

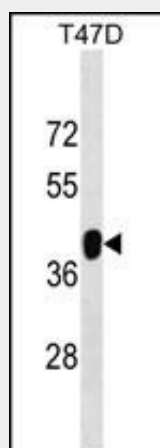
Ubiquitous. Highly expressed in heart and skeletal muscle.

**ZNF322A Antibody (C-term) - Protocols**

Provided below are standard protocols that you may find useful for product applications.

- [Western Blot](#)
- [Blocking Peptides](#)
- [Dot Blot](#)
- [Immunohistochemistry](#)
- [Immunofluorescence](#)
- [Immunoprecipitation](#)
- [Flow Cytometry](#)
- [Cell Culture](#)

**ZNF322A Antibody (C-term) - Images**



ZNF322A Antibody (C-term) (Cat. #AP17366b) western blot analysis in T47D cell line lysates (35ug/lane). This demonstrates the ZNF322A antibody detected the ZNF322A protein (arrow).

**ZNF322A Antibody (C-term) - Background**

ZNF322A is a member of the zinc-finger transcription factor family and may regulate transcriptional activation in MAPK (see MAPK1; MIM 176948) signaling pathways (Li et al., 2004 [PubMed 15555580]).

### **ZNF322A Antibody (C-term) - References**

Rose, J. Phd, et al. Mol. Med. (2010) In press :

Li, Y., et al. Biochem. Biophys. Res. Commun. 325(4):1383-1392(2004)