

**ACYP1 Antibody (C-term)**  
**Affinity Purified Rabbit Polyclonal Antibody (Pab)**  
**Catalog # AP17380b****Specification**

---

**ACYP1 Antibody (C-term) - Product Information**

Application	WB,E
Primary Accession	<a href="#">P07311</a>
Other Accession	<a href="#">NP_982355.1</a> , <a href="#">NP_001098.1</a>
Reactivity	Human
Host	Rabbit
Clonality	Polyclonal
Isotype	Rabbit IgG
Calculated MW	11261
Antigen Region	52-80

**ACYP1 Antibody (C-term) - Additional Information****Gene ID 97****Other Names**

Acylphosphatase-1, Acylphosphatase, erythrocyte isozyme, Acylphosphatase, organ-common type isozyme, Acylphosphate phosphohydrolase 1, ACYP1, ACYPE

**Target/Specificity**

This ACYP1 antibody is generated from rabbits immunized with a KLH conjugated synthetic peptide between 52-80 amino acids from the C-terminal region of human ACYP1.

**Dilution**

WB~~1:1000

E~~Use at an assay dependent concentration.

**Format**

Purified polyclonal antibody supplied in PBS with 0.09% (W/V) sodium azide. This antibody is purified through a protein A column, followed by peptide affinity purification.

**Storage**

Maintain refrigerated at 2-8°C for up to 2 weeks. For long term storage store at -20°C in small aliquots to prevent freeze-thaw cycles.

**Precautions**

ACYP1 Antibody (C-term) is for research use only and not for use in diagnostic or therapeutic procedures.

**ACYP1 Antibody (C-term) - Protein Information**

**Name** ACYP1

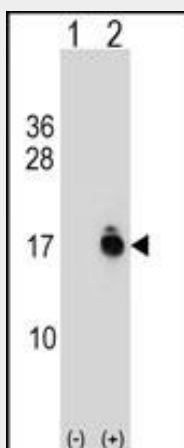
**Synonyms** ACYPE**Tissue Location**

Organ-common type isozyme is found in many different tissues

**ACYP1 Antibody (C-term) - Protocols**

Provided below are standard protocols that you may find useful for product applications.

- [Western Blot](#)
- [Blocking Peptides](#)
- [Dot Blot](#)
- [Immunohistochemistry](#)
- [Immunofluorescence](#)
- [Immunoprecipitation](#)
- [Flow Cytometry](#)
- [Cell Culture](#)

**ACYP1 Antibody (C-term) - Images**

Western blot analysis of ACYP1 (arrow) using rabbit polyclonal ACYP1 Antibody (C-term) (Cat. #AP17380b). 293 cell lysates (2 ug/lane) either nontransfected (Lane 1) or transiently transfected (Lane 2) with the ACYP1 gene.

**ACYP1 Antibody (C-term) - Background**

Acylphosphatase is a small cytosolic enzyme that catalyzes the hydrolysis of the carboxyl-phosphate bond of acylphosphates. Two isoenzymes have been isolated, called muscle acylphosphatase and erythrocyte acylphosphatase, on the basis of their tissue localization. This gene encodes the erythrocyte acylphosphatase isoenzyme. Alternatively spliced transcript variants that encode different proteins were identified through data analysis. [provided by RefSeq].

**ACYP1 Antibody (C-term) - References**

Degl'Innocenti, D., et al. IUBMB Life 56(1):29-33(2004)  
Heilig, R., et al. Nature 421(6923):601-607(2003)  
Paoli, P., et al. J. Biol. Chem. 278(1):194-199(2003)

Fiaschi, T., et al. Cytogenet. Cell Genet. 81 (3-4), 235-236 (1998) :  
Fiaschi, T., et al. FEBS Lett. 367(2):145-148(1995)