

**PFDN1 Antibody (C-term)**  
**Affinity Purified Rabbit Polyclonal Antibody (Pab)**  
**Catalog # AP17388B**

**Specification**

---

**PFDN1 Antibody (C-term) - Product Information**

Application	WB,E
Primary Accession	<a href="#">O60925</a>
Other Accession	<a href="#">O9CWM4</a> , <a href="#">Q3SZE2</a> , <a href="#">NP_002613.2</a>
Reactivity	Human, Mouse
Predicted	Bovine
Host	Rabbit
Clonality	Polyclonal
Isotype	Rabbit IgG
Calculated MW	14210
Antigen Region	86-113

**PFDN1 Antibody (C-term) - Additional Information**

**Gene ID** 5201

**Other Names**

Prefoldin subunit 1, PFDN1, PFD1

**Target/Specificity**

This PFDN1 antibody is generated from rabbits immunized with a KLH conjugated synthetic peptide between 86-113 amino acids from the C-terminal region of human PFDN1.

**Dilution**

WB~~1:1000

E~~Use at an assay dependent concentration.

**Format**

Purified polyclonal antibody supplied in PBS with 0.09% (W/V) sodium azide. This antibody is purified through a protein A column, followed by peptide affinity purification.

**Storage**

Maintain refrigerated at 2-8°C for up to 2 weeks. For long term storage store at -20°C in small aliquots to prevent freeze-thaw cycles.

**Precautions**

PFDN1 Antibody (C-term) is for research use only and not for use in diagnostic or therapeutic procedures.

**PFDN1 Antibody (C-term) - Protein Information**

**Name** PFDN1

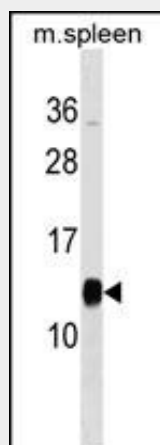
**Synonyms** PFD1

**Function** Binds specifically to cytosolic chaperonin (c-CPN) and transfers target proteins to it. Binds to nascent polypeptide chain and promotes folding in an environment in which there are many competing pathways for nonnative proteins.

**PFDN1 Antibody (C-term) - Protocols**

Provided below are standard protocols that you may find useful for product applications.

- [Western Blot](#)
- [Blocking Peptides](#)
- [Dot Blot](#)
- [Immunohistochemistry](#)
- [Immunofluorescence](#)
- [Immunoprecipitation](#)
- [Flow Cytometry](#)
- [Cell Culture](#)

**PFDN1 Antibody (C-term) - Images**

PFDN1 Antibody (C-term) (Cat. #AP17388b) western blot analysis in mouse spleen tissue lysates (35ug/lane). This demonstrates the PFDN1 antibody detected the PFDN1 protein (arrow).

**PFDN1 Antibody (C-term) - Background**

This gene encodes a member of the prefoldin beta subunit family. The encoded protein is one of six subunits of prefoldin, a molecular chaperone complex that binds and stabilizes newly synthesized polypeptides, thereby allowing them to fold correctly. The complex, consisting of two alpha and four beta subunits, forms a double beta barrel assembly with six protruding coiled-coils.

**PFDN1 Antibody (C-term) - References**

Ewing, R.M., et al. Mol. Syst. Biol. 3, 89 (2007) :  
Stirling, P.C., et al. J. Biol. Chem. 281(11):7012-7021(2006)  
Stelzl, U., et al. Cell 122(6):957-968(2005)  
Simons, C.T., et al. J. Biol. Chem. 279(6):4196-4203(2004)  
Gstaiger, M., et al. Science 302(5648):1208-1212(2003)