

**SOST Antibody (N-term)**  
**Affinity Purified Rabbit Polyclonal Antibody (Pab)**  
**Catalog # AP17391A****Specification**

---

**SOST Antibody (N-term) - Product Information**

Application	WB,E
Primary Accession	<a href="#">O9BOB4</a>
Other Accession	<a href="#">O9BG79</a> , <a href="#">NP_079513.1</a>
Reactivity	Human, Mouse
Predicted	Bovine
Host	Rabbit
Clonality	Polyclonal
Isotype	Rabbit IgG
Calculated MW	24031
Antigen Region	38-66

**SOST Antibody (N-term) - Additional Information****Gene ID** 50964**Other Names**

Sclerostin, SOST

**Target/Specificity**

This SOST antibody is generated from rabbits immunized with a KLH conjugated synthetic peptide between 38-66 amino acids from the N-terminal region of human SOST.

**Dilution**

WB~~1:500

E~~Use at an assay dependent concentration.

**Format**

Purified polyclonal antibody supplied in PBS with 0.09% (W/V) sodium azide. This antibody is purified through a protein A column, followed by peptide affinity purification.

**Storage**

Maintain refrigerated at 2-8°C for up to 2 weeks. For long term storage store at -20°C in small aliquots to prevent freeze-thaw cycles.

**Precautions**

SOST Antibody (N-term) is for research use only and not for use in diagnostic or therapeutic procedures.

**SOST Antibody (N-term) - Protein Information****Name** SOST ([HGNC:13771](#))

**Function** Negative regulator of bone growth that acts through inhibition of Wnt signaling and bone formation.

**Cellular Location**

Secreted, extracellular space, extracellular matrix

**Tissue Location**

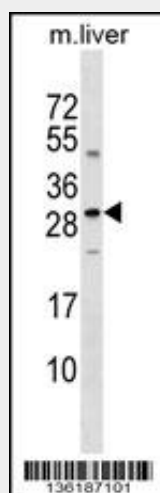
Widely expressed at low levels with highest levels in bone, cartilage, kidney, liver, bone marrow and primary osteoblasts differentiated for 21 days. Detected in the subendothelial layer of the aortic intima (at protein level).

**SOST Antibody (N-term) - Protocols**

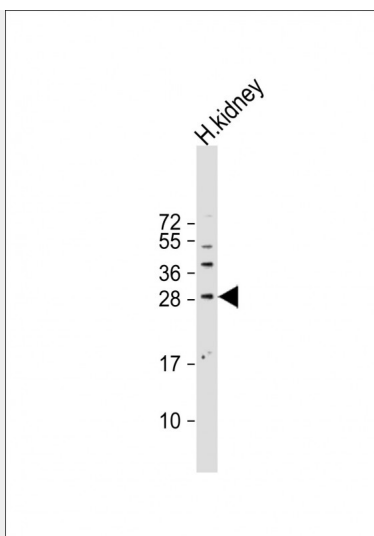
Provided below are standard protocols that you may find useful for product applications.

- [Western Blot](#)
- [Blocking Peptides](#)
- [Dot Blot](#)
- [Immunohistochemistry](#)
- [Immunofluorescence](#)
- [Immunoprecipitation](#)
- [Flow Cytometry](#)
- [Cell Culture](#)

**SOST Antibody (N-term) - Images**



SOST Antibody (N-term) (Cat. #AP17391a) western blot analysis in mouse liver tissue lysates (35ug/lane). This demonstrates the SOST antibody detected the SOST protein (arrow).



Anti-SOST Antibody (N-term) at 1:500 dilution + human kidney lysate Lysates/proteins at 20 µg per lane. Secondary Goat Anti-Rabbit IgG, (H+L), Peroxidase conjugated at 1/10000 dilution. Predicted band size : 24 kDa Blocking/Dilution buffer: 5% NFDM/TBST.

### **SOST Antibody (N-term) - Background**

Sclerostin is a secreted glycoprotein with a C-terminal cysteine knot-like (CTCK) domain and sequence similarity to the DAN (differential screening-selected gene aberrative in neuroblastoma) family of bone morphogenetic protein (BMP) antagonists. Loss-of-function mutations in this gene are associated with an autosomal-recessive disorder, sclerosteosis, which causes progressive bone overgrowth. A deletion downstream of this gene, which causes reduced sclerostin expression, is associated with a milder form of the disorder called van Buchem disease. [provided by RefSeq].

### **SOST Antibody (N-term) - References**

van Lierop, A.H., et al. Eur. J. Endocrinol. 163(5):833-837(2010)  
Liu, J.M., et al. J. Clin. Endocrinol. Metab. 95 (9), E112-E120 (2010) :  
Paternoster, L., et al. J. Clin. Endocrinol. Metab. 95(8):3940-3948(2010)  
Piters, E., et al. Hum. Mutat. 31 (7), E1526-E1543 (2010) :  
Collette, N.M., et al. Dev. Biol. 342(2):169-179(2010)