

**SOSTDC1 Antibody (C-term)**  
**Affinity Purified Rabbit Polyclonal Antibody (Pab)**  
**Catalog # AP17397b**

**Specification**

---

**SOSTDC1 Antibody (C-term) - Product Information**

Application	WB,E
Primary Accession	<a href="#">Q6X4U4</a>
Other Accession	<a href="#">NP_056279.1</a>
Reactivity	Human, Mouse
Host	Rabbit
Clonality	Polyclonal
Isotype	Rabbit IgG
Calculated MW	23307
Antigen Region	169-196

**SOSTDC1 Antibody (C-term) - Additional Information**

**Gene ID** 25928

**Other Names**

Sclerostin domain-containing protein 1, Ectodermal BMP inhibitor, Ectodin, Uterine sensitization-associated gene 1 protein, USAG-1, SOSTDC1, USAG1

**Target/Specificity**

This SOSTDC1 antibody is generated from rabbits immunized with a KLH conjugated synthetic peptide between 169-196 amino acids from the C-terminal region of human SOSTDC1.

**Dilution**

WB~~1:1000

**Format**

Purified polyclonal antibody supplied in PBS with 0.09% (W/V) sodium azide. This antibody is purified through a protein A column, followed by peptide affinity purification.

**Storage**

Maintain refrigerated at 2-8°C for up to 2 weeks. For long term storage store at -20°C in small aliquots to prevent freeze-thaw cycles.

**Precautions**

SOSTDC1 Antibody (C-term) is for research use only and not for use in diagnostic or therapeutic procedures.

**SOSTDC1 Antibody (C-term) - Protein Information**

**Name** SOSTDC1

**Synonyms** USAG1

**Function** May be involved in the onset of endometrial receptivity for implantation/sensitization for the decidual cell reaction Enhances Wnt signaling and inhibits TGF-beta signaling (By similarity). Directly antagonizes activity of BMP2, BMP4, BMP6 and BMP7 in a dose-dependent manner.

**Cellular Location**

Secreted.

**Tissue Location**

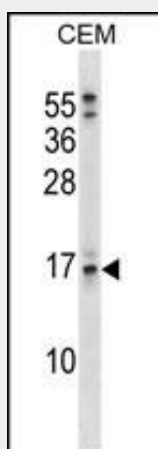
Highly expressed in kidney and weakly in lung.

**SOSTDC1 Antibody (C-term) - Protocols**

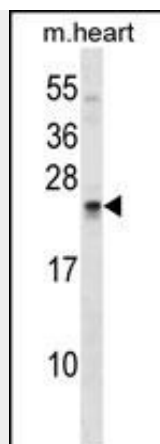
Provided below are standard protocols that you may find useful for product applications.

- [Western Blot](#)
- [Blocking Peptides](#)
- [Dot Blot](#)
- [Immunohistochemistry](#)
- [Immunofluorescence](#)
- [Immunoprecipitation](#)
- [Flow Cytometry](#)
- [Cell Culture](#)

**SOSTDC1 Antibody (C-term) - Images**



SOSTDC1 Antibody (C-term) (Cat. #AP17397b) western blot analysis in CEM cell line lysates (35ug/lane). This demonstrates the SOSTDC1 antibody detected the SOSTDC1 protein (arrow).



SOSTDC1 Antibody (C-term) (Cat. #AP17397b) western blot analysis in mouse heart tissue lysates (35ug/lane). This demonstrates the SOSTDC1 antibody detected the SOSTDC1 protein (arrow).

#### **SOSTDC1 Antibody (C-term) - Background**

This gene is a member of the sclerostin family and encodes an N-glycosylated, secreted protein with a C-terminal cystine knot-like domain. This protein functions as a bone morphogenetic protein (BMP) antagonist. Specifically, it directly associates with BMPs, prohibiting them from binding their receptors, thereby regulating BMP signaling during cellular proliferation, differentiation, and programmed cell death.

#### **SOSTDC1 Antibody (C-term) - References**

Barber, M.J., et al. PLoS ONE 5 (3), E9763 (2010) :  
Ohshima, J., et al. Genes Chromosomes Cancer 48(12):1037-1050(2009)  
Blish, K.R., et al. Mol. Biol. Cell 19(2):457-464(2008)  
Lamesch, P., et al. Genomics 89(3):307-315(2007)  
Yanagita, M. Cytokine Growth Factor Rev. 16(3):309-317(2005)