

SRA1 Antibody (C-term)
Affinity Purified Rabbit Polyclonal Antibody (Pab)
Catalog # AP17404b**Specification**

SRA1 Antibody (C-term) - Product Information

Application	WB,E
Primary Accession	O9HD15
Other Accession	NP_001030312.2
Reactivity	Human
Host	Rabbit
Clonality	Polyclonal
Isotype	Rabbit IgG
Calculated MW	24400
Antigen Region	193-222

SRA1 Antibody (C-term) - Additional Information**Gene ID** 10011**Other Names**

Steroid receptor RNA activator 1, Steroid receptor RNA activator protein, SRAP, SRA1 (HGNC:11281)

Target/Specificity

This SRA1 antibody is generated from rabbits immunized with a KLH conjugated synthetic peptide between 193-222 amino acids from the C-terminal region of human SRA1.

Dilution

WB~~1:1000

E~~Use at an assay dependent concentration.

Format

Purified polyclonal antibody supplied in PBS with 0.09% (W/V) sodium azide. This antibody is purified through a protein A column, followed by peptide affinity purification.

Storage

Maintain refrigerated at 2-8°C for up to 2 weeks. For long term storage store at -20°C in small aliquots to prevent freeze-thaw cycles.

Precautions

SRA1 Antibody (C-term) is for research use only and not for use in diagnostic or therapeutic procedures.

SRA1 Antibody (C-term) - Protein Information**Name** SRA1 ([HGNC:11281](#))

Function Functional RNA which acts as a transcriptional coactivator that selectively enhances steroid receptor-mediated transactivation ligand-independently through a mechanism involving the modulating N- terminal domain (AF-1) of steroid receptors. Also mediates transcriptional coactivation of steroid receptors ligand-dependently through the steroid-binding domain (AF-2). Enhances cellular proliferation and differentiation and promotes apoptosis in vivo. May play a role in tumorigenesis.

Cellular Location

Nucleus. Cytoplasm

Tissue Location

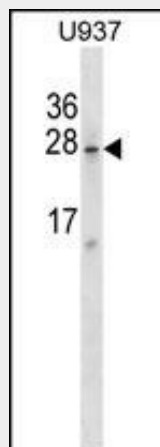
Highly expressed in liver and skeletal muscle and to a lesser extent in brain. Also expressed in both normal and tumorigenic breast epithelial cell lines. Significantly up-regulated in human tumors of the breast, ovary, and uterus

SRA1 Antibody (C-term) - Protocols

Provided below are standard protocols that you may find useful for product applications.

- [Western Blot](#)
- [Blocking Peptides](#)
- [Dot Blot](#)
- [Immunohistochemistry](#)
- [Immunofluorescence](#)
- [Immunoprecipitation](#)
- [Flow Cytometry](#)
- [Cell Culture](#)

SRA1 Antibody (C-term) - Images



SRA1 Antibody (C-term) (Cat. #AP17404b) western blot analysis in U937 cell line lysates (35ug/lane). This demonstrates the SRA1 antibody detected the SRA1 protein (arrow).

SRA1 Antibody (C-term) - Background

This gene is involved in transcriptional coactivation by steroid receptors. There is currently data suggesting this gene encodes both a non-coding RNA that functions as part of a ribonucleoprotein complex and a protein coding mRNA. Increased expression of both the transcript and the protein is associated

with cancer.

SRA1 Antibody (C-term) - References

Yao, H., et al. Genes Dev. 24(22):2543-2555(2010)
Shimada, M., et al. Hum. Genet. 128(4):433-441(2010)
Beauvillain, C., et al. J. Hepatol. 52(5):644-651(2010)
Foulds, C.E., et al. Mol. Endocrinol. 24(5):1090-1105(2010)
Chooniedass-Kothari, S., et al. FEBS Lett. 584(6):1174-1180(2010)