

TRIM16 Antibody (N-term)
Affinity Purified Rabbit Polyclonal Antibody (Pab)
Catalog # AP17411a**Specification**

TRIM16 Antibody (N-term) - Product Information

Application	WB,E
Primary Accession	O95361
Other Accession	NP_006461.3
Reactivity	Human
Host	Rabbit
Clonality	Polyclonal
Isotype	Rabbit IgG
Calculated MW	63955
Antigen Region	38-67

TRIM16 Antibody (N-term) - Additional Information**Gene ID** 10626**Other Names**

Tripartite motif-containing protein 16, Estrogen-responsive B box protein, TRIM16, EBBP

Target/Specificity

This TRIM16 antibody is generated from rabbits immunized with a KLH conjugated synthetic peptide between 38-67 amino acids from the N-terminal region of human TRIM16.

Dilution

WB~~1:1000

Format

Purified polyclonal antibody supplied in PBS with 0.09% (W/V) sodium azide. This antibody is purified through a protein A column, followed by peptide affinity purification.

Storage

Maintain refrigerated at 2-8°C for up to 2 weeks. For long term storage store at -20°C in small aliquots to prevent freeze-thaw cycles.

Precautions

TRIM16 Antibody (N-term) is for research use only and not for use in diagnostic or therapeutic procedures.

TRIM16 Antibody (N-term) - Protein Information**Name** TRIM16**Synonyms** EBBP

Function E3 ubiquitin ligase that plays an essential role in the organization of autophagic response and ubiquitination upon lysosomal and phagosomal damages. Plays a role in the stress-induced biogenesis and degradation of protein aggregates by regulating the p62-KEAP1-NRF2 signaling and particularly by modulating the ubiquitination levels and thus stability of NRF2. Acts as a scaffold protein and facilitates autophagic degradation of protein aggregates by interacting with p62/SQSTM, ATG16L1 and LC3B/MAP1LC3B. In turn, protects the cell against oxidative stress-induced cell death as a consequence of endomembrane damage.

Cellular Location

Cytoplasm.

Tissue Location

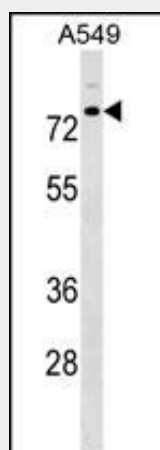
Highest levels found in testis, ovary, small intestine, colon, placenta, heart, skeletal muscle and mammary gland More highly expressed in the fetus than in the corresponding adult tissues. Expressed in basal keratinocytes

TRIM16 Antibody (N-term) - Protocols

Provided below are standard protocols that you may find useful for product applications.

- [Western Blot](#)
- [Blocking Peptides](#)
- [Dot Blot](#)
- [Immunohistochemistry](#)
- [Immunofluorescence](#)
- [Immunoprecipitation](#)
- [Flow Cytometry](#)
- [Cell Culture](#)

TRIM16 Antibody (N-term) - Images



TRIM16 Antibody (N-term) (Cat. #AP17411a) western blot analysis in A549 cell line lysates (35ug/lane). This demonstrates the TRIM16 antibody detected the TRIM16 protein (arrow).

TRIM16 Antibody (N-term) - Background

This gene was identified as an estrogen and anti-estrogen regulated gene in epithelial cells stably expressing estrogen receptor. The protein encoded by this gene contains two B box domains and a coiled-coiled region that are characteristic of the B

box zinc finger protein family. The proteins of this family have been reported to be involved in a variety of biological processes including cell growth, differentiation and pathogenesis. Expression of this gene was detected in most tissues. Its function, however, has not yet been determined.

TRIM16 Antibody (N-term) - References

Raif, A., et al. Cancer Lett. 277(1):82-90(2009)
Olsen, J.V., et al. Cell 127(3):635-648(2006)
Munding, C., et al. Cell Death Differ. 13(11):1938-1949(2006)
Cheung, B.B., et al. J. Biol. Chem. 281(26):18246-18256(2006)
Gwinn, M.R., et al. Environ. Health Perspect. 113(8):1046-1051(2005)