

**HLF Antibody (C-term)**  
**Affinity Purified Rabbit Polyclonal Antibody (Pab)**  
**Catalog # AP17419b****Specification**

---

**HLF Antibody (C-term) - Product Information**

Application	WB,E
Primary Accession	<a href="#">Q16534</a>
Other Accession	<a href="#">Q64709</a> , <a href="#">Q8BW74</a> , <a href="#">NP_002117.1</a>
Reactivity	Human
Predicted	Mouse, Rat
Host	Rabbit
Clonality	Polyclonal
Isotype	Rabbit IgG
Calculated MW	33199
Antigen Region	204-232

**HLF Antibody (C-term) - Additional Information****Gene ID** 3131**Other Names**

Hepatic leukemia factor, HLF

**Target/Specificity**

This HLF antibody is generated from rabbits immunized with a KLH conjugated synthetic peptide between 204-232 amino acids from the C-terminal region of human HLF.

**Dilution**

WB~~1:2000

**Format**

Purified polyclonal antibody supplied in PBS with 0.09% (W/V) sodium azide. This antibody is purified through a protein A column, followed by peptide affinity purification.

**Storage**

Maintain refrigerated at 2-8°C for up to 2 weeks. For long term storage store at -20°C in small aliquots to prevent freeze-thaw cycles.

**Precautions**

HLF Antibody (C-term) is for research use only and not for use in diagnostic or therapeutic procedures.

**HLF Antibody (C-term) - Protein Information****Name** HLF**Cellular Location**

Nucleus.

#### **Tissue Location**

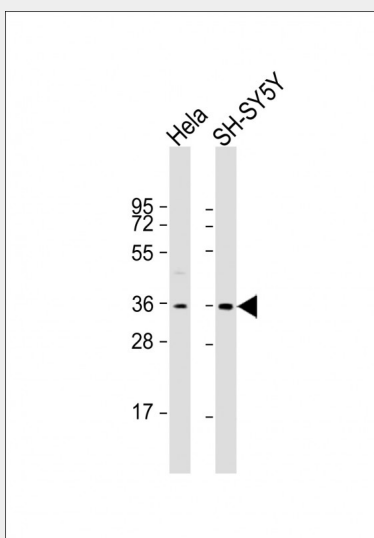
Highly expressed in liver; lower levels in lung and kidney

#### **HLF Antibody (C-term) - Protocols**

Provided below are standard protocols that you may find useful for product applications.

- [Western Blot](#)
- [Blocking Peptides](#)
- [Dot Blot](#)
- [Immunohistochemistry](#)
- [Immunofluorescence](#)
- [Immunoprecipitation](#)
- [Flow Cytometry](#)
- [Cell Culture](#)

#### **HLF Antibody (C-term) - Images**



All lanes : Anti-HLF Antibody (C-term) at 1:2000 dilution Lane 1: HeLa whole cell lysate Lane 2: SH-SY5Y whole cell lysate Lysates/proteins at 20 µg per lane. Secondary Goat Anti-Rabbit IgG, (H+L), Peroxidase conjugated at 1/10000 dilution. Predicted band size : 33 kDa Blocking/Dilution buffer: 5% NFDM/TBST.

#### **HLF Antibody (C-term) - Background**

This gene encodes a member of the proline and acidic-rich (PAR) protein family, a subset of the bZIP transcription factors. The encoded protein forms homodimers or heterodimers with other PAR family members and binds sequence-specific promoter elements to activate transcription. Chromosomal translocations fusing portions of this gene with the E2A gene cause a subset of childhood B-lineage acute lymphoid leukemias. Alternatively spliced transcript variants have been described, but their biological validity has not been determined.

**HLF Antibody (C-term) - References**

Hirose, K., et al. Blood 116(6):962-970(2010)  
Joslyn, G., et al. Alcohol. Clin. Exp. Res. 34(5):800-812(2010)  
Otto, T., et al. Endocrinology 149(5):2241-2250(2008)  
Inukai, T., et al. Leukemia 21(2):288-296(2007)  
He, J., et al. Zhonghua Yi Xue Yi Chuan Xue Za Zhi 22(5):551-553(2005)