

**PPFIA1 Antibody (N-term)**  
**Affinity Purified Rabbit Polyclonal Antibody (Pab)**  
**Catalog # AP17425a**

**Specification**

---

**PPFIA1 Antibody (N-term) - Product Information**

Application	WB,E
Primary Accession	<a href="#">Q13136</a>
Other Accession	<a href="#">NP_003617.1</a> , <a href="#">NP_803172.1</a>
Reactivity	Human
Host	Rabbit
Clonality	Polyclonal
Isotype	Rabbit IgG
Calculated MW	135779
Antigen Region	52-80

**PPFIA1 Antibody (N-term) - Additional Information**

**Gene ID** 8500

**Other Names**

Liprin-alpha-1, LAR-interacting protein 1, LIP-1, Protein tyrosine phosphatase receptor type f polypeptide-interacting protein alpha-1, PTPRF-interacting protein alpha-1, PPFIA1, LIP1

**Target/Specificity**

This PPFIA1 antibody is generated from rabbits immunized with a KLH conjugated synthetic peptide between 52-80 amino acids from the N-terminal region of human PPFIA1.

**Dilution**

WB~~1:1000

E~~Use at an assay dependent concentration.

**Format**

Purified polyclonal antibody supplied in PBS with 0.09% (W/V) sodium azide. This antibody is purified through a protein A column, followed by peptide affinity purification.

**Storage**

Maintain refrigerated at 2-8°C for up to 2 weeks. For long term storage store at -20°C in small aliquots to prevent freeze-thaw cycles.

**Precautions**

PPFIA1 Antibody (N-term) is for research use only and not for use in diagnostic or therapeutic procedures.

**PPFIA1 Antibody (N-term) - Protein Information**

**Name** PPFIA1

**Synonyms** LIP1

**Function** May regulate the disassembly of focal adhesions. May localize receptor-like tyrosine phosphatases type 2A at specific sites on the plasma membrane, possibly regulating their interaction with the extracellular environment and their association with substrates.

**Cellular Location**

Cytoplasm, cell cortex. Cytoplasm Note=Colocalizes with PTPRF near focal adhesions

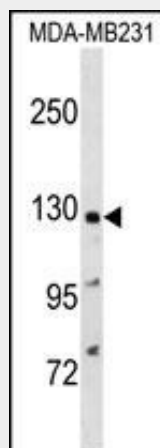
**Tissue Location**

Ubiquitous.

**PPFIA1 Antibody (N-term) - Protocols**

Provided below are standard protocols that you may find useful for product applications.

- [Western Blot](#)
- [Blocking Peptides](#)
- [Dot Blot](#)
- [Immunohistochemistry](#)
- [Immunofluorescence](#)
- [Immunoprecipitation](#)
- [Flow Cytometry](#)
- [Cell Culture](#)

**PPFIA1 Antibody (N-term) - Images**

PPFIA1 Antibody (N-term) (Cat. #AP17425a) western blot analysis in MDA-MB231 cell line lysates (35ug/lane). This demonstrates the PPFIA1 antibody detected the PPFIA1 protein (arrow).

**PPFIA1 Antibody (N-term) - Background**

The protein encoded by this gene is a member of the LAR protein-tyrosine phosphatase-interacting protein (liprin) family. Liprins interact with members of LAR family of transmembrane protein tyrosine phosphatases, which are known to be important for axon guidance and mammary gland development. This protein binds to the intracellular membrane-distal phosphatase domain of tyrosine phosphatase LAR, and appears to localize LAR to cell focal adhesions. This interaction may regulate the disassembly of focal

adhesion and thus help orchestrate cell-matrix interactions. Alternatively spliced transcript variants encoding distinct isoforms have been described.

#### **PPFIA1 Antibody (N-term) - References**

Asperti, C., et al. Exp. Cell Res. 316(6):915-926(2010)  
Dancau, A.M., et al. Genes Chromosomes Cancer 49(1):1-8(2010)  
Asperti, C., et al. J. Cell. Sci. 122 (PT 18), 3225-3232 (2009) :  
Venkatesan, K., et al. Nat. Methods 6(1):83-90(2009)  
Tan, K.D., et al. Genes Chromosomes Cancer 47(4):353-362(2008)