

**CLCNKA Antibody (N-term)**  
**Affinity Purified Rabbit Polyclonal Antibody (Pab)**  
**Catalog # AP17427a**

**Specification**

---

**CLCNKA Antibody (N-term) - Product Information**

Application	WB,E
Primary Accession	<a href="#">P51800</a>
Other Accession	<a href="#">NP_001036169.1</a> , <a href="#">NP_004061.3</a>
Reactivity	Human
Host	Rabbit
Clonality	Polyclonal
Isotype	Rabbit IgG
Calculated MW	75285
Antigen Region	20-47

**CLCNKA Antibody (N-term) - Additional Information**

**Gene ID** 1187

**Other Names**

Chloride channel protein CIC-Ka, Chloride channel Ka, CIC-K1, CLCNKA

**Target/Specificity**

This CLCNKA antibody is generated from rabbits immunized with a KLH conjugated synthetic peptide between 20-47 amino acids from the N-terminal region of human CLCNKA.

**Dilution**

WB~~1:1000

**Format**

Purified polyclonal antibody supplied in PBS with 0.09% (W/V) sodium azide. This antibody is purified through a protein A column, followed by peptide affinity purification.

**Storage**

Maintain refrigerated at 2-8°C for up to 2 weeks. For long term storage store at -20°C in small aliquots to prevent freeze-thaw cycles.

**Precautions**

CLCNKA Antibody (N-term) is for research use only and not for use in diagnostic or therapeutic procedures.

**CLCNKA Antibody (N-term) - Protein Information**

**Name** CLCNKA

**Function** Voltage-gated chloride channel. Chloride channels have several functions including the regulation of cell volume; membrane potential stabilization, signal transduction and transepithelial

transport. May be important in urinary concentrating mechanisms.

#### **Cellular Location**

Membrane; Multi-pass membrane protein.

#### **Tissue Location**

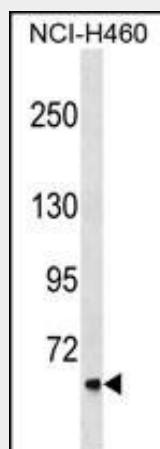
Expressed predominantly in the kidney. All nephron segments expressing BSND also express CLCNK proteins

### **CLCNKA Antibody (N-term) - Protocols**

Provided below are standard protocols that you may find useful for product applications.

- [Western Blot](#)
- [Blocking Peptides](#)
- [Dot Blot](#)
- [Immunohistochemistry](#)
- [Immunofluorescence](#)
- [Immunoprecipitation](#)
- [Flow Cytometry](#)
- [Cell Culture](#)

### **CLCNKA Antibody (N-term) - Images**



CLCNKA Antibody (N-term) (Cat. #AP17427a) western blot analysis in NCI-H460 cell line lysates (35ug/lane). This demonstrates the CLCNKA antibody detected the CLCNKA protein (arrow).

### **CLCNKA Antibody (N-term) - Background**

This gene is a member of the CLC family of voltage-gated chloride channels. The encoded protein is predicted to have 12 transmembrane domains, and requires a beta subunit called barttin to form a functional channel. It is thought to function in salt reabsorption in the kidney and potassium recycling in the inner ear. The gene is highly similar to CLCNKB, which is located 10 kb downstream from this gene. Multiple transcript variants encoding different isoforms have been found for this gene. [provided by RefSeq].

### **CLCNKA Antibody (N-term) - References**

Bailey, S.D., et al. Diabetes Care (2010) In press :  
Talmud, P.J., et al. Am. J. Hum. Genet. 85(5):628-642(2009)  
Kramer, B.K., et al. Nat Clin Pract Nephrol 4(1):38-46(2008)  
Martinez, G.Q., et al. PLoS ONE 3 (7), E2746 (2008) :  
Sile, S., et al. Hum. Hered. 65(1):33-46(2008)