

ABLIM3 Antibody (C-term)
Affinity Purified Rabbit Polyclonal Antibody (Pab)
Catalog # AP17435b**Specification**

ABLIM3 Antibody (C-term) - Product Information

Application	WB,E
Primary Accession	O94929
Other Accession	Q69ZX8 , NP_055760.1
Reactivity	Human
Predicted	Mouse
Host	Rabbit
Clonality	Polyclonal
Isotype	Rabbit IgG
Calculated MW	77802
Antigen Region	613-641

ABLIM3 Antibody (C-term) - Additional Information**Gene ID** 22885**Other Names**

Actin-binding LIM protein 3, abLIM-3, Actin-binding LIM protein family member 3, ABLIM3, KIAA0843

Target/Specificity

This ABLIM3 antibody is generated from rabbits immunized with a KLH conjugated synthetic peptide between 613-641 amino acids from the C-terminal region of human ABLIM3.

Dilution

WB~~1:1000

Format

Purified polyclonal antibody supplied in PBS with 0.09% (W/V) sodium azide. This antibody is purified through a protein A column, followed by peptide affinity purification.

Storage

Maintain refrigerated at 2-8°C for up to 2 weeks. For long term storage store at -20°C in small aliquots to prevent freeze-thaw cycles.

Precautions

ABLIM3 Antibody (C-term) is for research use only and not for use in diagnostic or therapeutic procedures.

ABLIM3 Antibody (C-term) - Protein Information**Name** ABLIM3

Synonyms KIAA0843

Function May act as scaffold protein. May stimulate ABRA activity and ABRA-dependent SRF transcriptional activity.

Cellular Location

Cytoplasm.

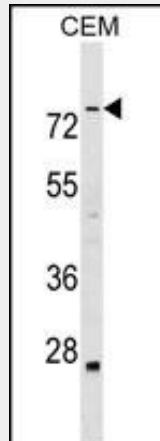
Tissue Location

Expressed predominantly in heart and brain.

ABLIM3 Antibody (C-term) - Protocols

Provided below are standard protocols that you may find useful for product applications.

- [Western Blot](#)
- [Blocking Peptides](#)
- [Dot Blot](#)
- [Immunohistochemistry](#)
- [Immunofluorescence](#)
- [Immunoprecipitation](#)
- [Flow Cytometry](#)
- [Cell Culture](#)

ABLIM3 Antibody (C-term) - Images

ABLIM3 Antibody (C-term) (Cat. #AP17435b) western blot analysis in CEM cell line lysates (35ug/lane). This demonstrates the ABLIM3 antibody detected the ABLIM3 protein (arrow).

ABLIM3 Antibody (C-term) - Background

The LIM domain is a double zinc finger structure that promotes protein-protein interactions. LIM domain proteins, such as ABLIM3, play roles in embryonic development, cell lineage determination, and cancer (Krupp et al., 2006 [PubMed 16328021]).

ABLIM3 Antibody (C-term) - References

Barrientos, T., et al. J. Biol. Chem. 282(11):8393-8403(2007)

Olsen, J.V., et al. Cell 127(3):635-648(2006)
Krupp, M., et al. Int. J. Mol. Med. 17(1):129-133(2006)
Zheng, B., et al. Biochim. Biophys. Acta 1690(1):1-10(2004)
Yamada, S., et al. Oncogene 23(35):5901-5911(2004)