

**Mouse Rps6ka2 Antibody (N-term)**  
**Affinity Purified Rabbit Polyclonal Antibody (Pab)**  
**Catalog # AP17438a**

**Specification**

---

**Mouse Rps6ka2 Antibody (N-term) - Product Information**

Application	WB,E
Primary Accession	<a href="#">O9WUT3</a>
Other Accession	<a href="#">NP_035429.1</a>
Reactivity	Mouse
Host	Rabbit
Clonality	Polyclonal
Isotype	Rabbit IgG
Antigen Region	191-218

**Mouse Rps6ka2 Antibody (N-term) - Additional Information**

**Gene ID** 20112

**Other Names**

Ribosomal protein S6 kinase alpha-2, S6K-alpha-2, 90 kDa ribosomal protein S6 kinase 2, p90-RSK 2, p90RSK2, MAP kinase-activated protein kinase 1c, MAPK-activated protein kinase 1c, MAPKAP kinase 1c, MAPKAPK-1c, Protein-tyrosine kinase Mpk-9, Ribosomal S6 kinase 3, RSK-3, pp90RSK3, Rps6ka2, Mapkapk1c, Rsk3

**Target/Specificity**

This Mouse Rps6ka2 antibody is generated from rabbits immunized with a KLH conjugated synthetic peptide between 191-218 amino acids from the N-terminal region of mouse Rps6ka2.

**Dilution**

WB~~1:1000

E~~Use at an assay dependent concentration.

**Format**

Purified polyclonal antibody supplied in PBS with 0.09% (W/V) sodium azide. This antibody is purified through a protein A column, followed by peptide affinity purification.

**Storage**

Maintain refrigerated at 2-8°C for up to 2 weeks. For long term storage store at -20°C in small aliquots to prevent freeze-thaw cycles.

**Precautions**

Mouse Rps6ka2 Antibody (N-term) is for research use only and not for use in diagnostic or therapeutic procedures.

**Mouse Rps6ka2 Antibody (N-term) - Protein Information**

**Name** Rps6ka2

### Synonyms Mapkapk1c, Rsk3

**Function** Serine/threonine-protein kinase that acts downstream of ERK (MAPK1/ERK2 and MAPK3/ERK1) signaling and mediates mitogenic and stress-induced activation of transcription factors, regulates translation, and mediates cellular proliferation, survival, and differentiation. May function as tumor suppressor in epithelial ovarian cancer cells (By similarity).

### Cellular Location

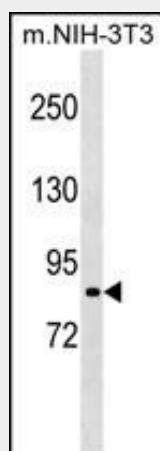
Nucleus. Cytoplasm.

### Mouse Rps6ka2 Antibody (N-term) - Protocols

Provided below are standard protocols that you may find useful for product applications.

- [Western Blot](#)
- [Blocking Peptides](#)
- [Dot Blot](#)
- [Immunohistochemistry](#)
- [Immunofluorescence](#)
- [Immunoprecipitation](#)
- [Flow Cytometry](#)
- [Cell Culture](#)

### Mouse Rps6ka2 Antibody (N-term) - Images



Mouse Rps6ka2 Antibody (N-term) (Cat. #AP17438a) western blot analysis in mouse NIH-3T3 cell line lysates (35ug/lane). This demonstrates the Rps6ka2 antibody detected the Rps6ka2 protein (arrow).

### Mouse Rps6ka2 Antibody (N-term) - Background

Serine/threonine kinase that may play a role in mediating the growth-factor and stress induced activation of the transcription factor CREB (By similarity).

### Mouse Rps6ka2 Antibody (N-term) - References

- Bae, G.U., et al. Mol. Biol. Cell 20(23):4920-4931(2009)  
Fischer, M., et al. Mol. Cell. Neurosci. 42(2):134-141(2009)  
Cho, Y.Y., et al. Cancer Res. 67(17):8104-8112(2007)  
Panasyuk, G., et al. J. Biol. Chem. 281(42):31188-31201(2006)

Maekawa, N., et al. Circulation 113(21):2516-2523(2006)