

Mouse Sik2 Antibody (Center)
Affinity Purified Rabbit Polyclonal Antibody (Pab)
Catalog # AP17441c**Specification**

Mouse Sik2 Antibody (Center) - Product Information

Application	WB,E
Primary Accession	Q8CFH6
Other Accession	NP_848825.2
Reactivity	Mouse
Host	Rabbit
Clonality	Polyclonal
Isotype	Rabbit IgG
Calculated MW	104198
Antigen Region	606-633

Mouse Sik2 Antibody (Center) - Additional Information**Gene ID** 235344**Other Names**

Serine/threonine-protein kinase SIK2, Salt-inducible kinase 2, SIK-2, Serine/threonine-protein kinase SNF1-like kinase 2, Sik2, Snf1lk2

Target/Specificity

This Mouse Sik2 antibody is generated from rabbits immunized with a KLH conjugated synthetic peptide between 606-633 amino acids from the Central region of mouse Sik2.

Dilution

WB~~1:1000

Format

Purified polyclonal antibody supplied in PBS with 0.09% (W/V) sodium azide. This antibody is purified through a protein A column, followed by peptide affinity purification.

Storage

Maintain refrigerated at 2-8°C for up to 2 weeks. For long term storage store at -20°C in small aliquots to prevent freeze-thaw cycles.

Precautions

Mouse Sik2 Antibody (Center) is for research use only and not for use in diagnostic or therapeutic procedures.

Mouse Sik2 Antibody (Center) - Protein Information**Name** Sik2**Synonyms** Snf1lk2

Function Serine/threonine-protein kinase that plays a role in many biological processes such as fatty acid oxidation, autophagy, immune response or glucose metabolism (PubMed:[12624099](#), PubMed:[16817901](#), PubMed:[29211348](#)). Phosphorylates 'Ser-794' of IRS1 in insulin- stimulated adipocytes, potentially modulating the efficiency of insulin signal transduction (PubMed:[12624099](#)). Inhibits CREB activity by phosphorylating and repressing TORCs, the CREB-specific coactivators (PubMed:[16817901](#)). Phosphorylates EP300 and thus inhibits its histone acetyltransferase activity. In turn, regulates the DNA-binding ability of several transcription factors such as PPARA or MLXIPL (By similarity). Also plays a role in thymic T-cell development (PubMed:[34732767](#)).

Cellular Location

Cytoplasm.

Tissue Location

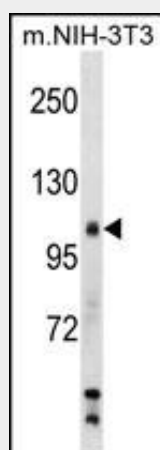
Present in both white and brown adipose tissues with levels increasing during adipocyte differentiation. Lower levels observed in the testis.

Mouse Sik2 Antibody (Center) - Protocols

Provided below are standard protocols that you may find useful for product applications.

- [Western Blot](#)
- [Blocking Peptides](#)
- [Dot Blot](#)
- [Immunohistochemistry](#)
- [Immunofluorescence](#)
- [Immunoprecipitation](#)
- [Flow Cytometry](#)
- [Cell Culture](#)

Mouse Sik2 Antibody (Center) - Images



Mouse Sik2 Antibody (Center) (Cat. #AP17441c) western blot analysis in mouse NIH-3T3 cell line lysates (35ug/lane). This demonstrates the Sik2 antibody detected the Sik2 protein (arrow).

Mouse Sik2 Antibody (Center) - Background

Phosphorylates 'Ser-789' of IRS1 in insulin-stimulated adipocytes, potentially modulating the efficiency of insulin signal transduction. Inhibits CREB activity by phosphorylating and repressing TORCs, the CREB-specific coactivators.

Mouse Sik2 Antibody (Center) - References

Trivedi, C.M., et al. Dev. Cell 19(3):450-459(2010)
Muraoka, M., et al. Am. J. Physiol. Endocrinol. Metab. 296 (6), E1430-E1439 (2009) :
Du, J., et al. Obesity (Silver Spring) 16(3):531-538(2008)
Katoh, Y., et al. FEBS J. 273(12):2730-2748(2006)
Horike, N., et al. J. Biol. Chem. 278(20):18440-18447(2003)