

PPFIBP1 Antibody (Center)
Affinity Purified Rabbit Polyclonal Antibody (Pab)
Catalog # AP17453c

Specification

PPFIBP1 Antibody (Center) - Product Information

Application	WB, IHC-P,E
Primary Accession	Q86W92
Other Accession	Q8C8U0 , NP_003613.2 , NP_803193.1
Reactivity	Human
Predicted	Mouse
Host	Rabbit
Clonality	Polyclonal
Isotype	Rabbit IgG
Calculated MW	114024
Antigen Region	588-617

PPFIBP1 Antibody (Center) - Additional Information

Gene ID 8496

Other Names

Liprin-beta-1, Protein tyrosine phosphatase receptor type f polypeptide-interacting protein-binding protein 1, PTPRF-interacting protein-binding protein 1, hSGT2, PPFIBP1, KIAA1230

Target/Specificity

This PPFIBP1 antibody is generated from rabbits immunized with a KLH conjugated synthetic peptide between 588-617 amino acids from the Central region of human PPFIBP1.

Dilution

WB~~1:2000

IHC-P~~1:100

E~~Use at an assay dependent concentration.

Format

Purified polyclonal antibody supplied in PBS with 0.09% (W/V) sodium azide. This antibody is purified through a protein A column, followed by peptide affinity purification.

Storage

Maintain refrigerated at 2-8°C for up to 2 weeks. For long term storage store at -20°C in small aliquots to prevent freeze-thaw cycles.

Precautions

PPFIBP1 Antibody (Center) is for research use only and not for use in diagnostic or therapeutic procedures.

PPFIBP1 Antibody (Center) - Protein Information

Name PPFIBP1

Synonyms KIAA1230

Function May regulate the disassembly of focal adhesions. Did not bind receptor-like tyrosine phosphatases type 2A.

Cellular Location

Cytoplasm, cell cortex

Tissue Location

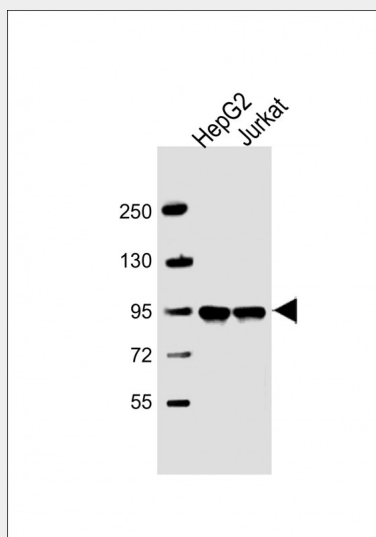
Widely expressed. Absent in liver.

PPFIBP1 Antibody (Center) - Protocols

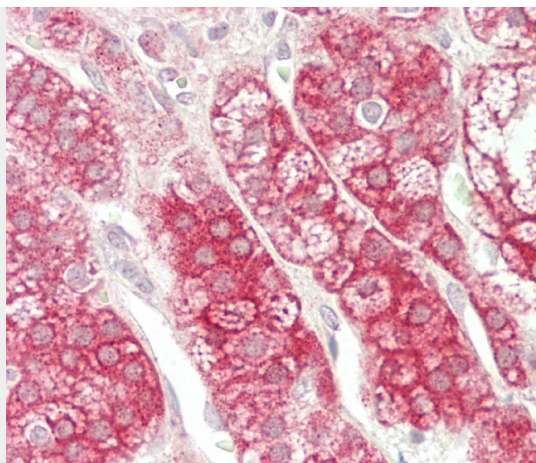
Provided below are standard protocols that you may find useful for product applications.

- [Western Blot](#)
- [Blocking Peptides](#)
- [Dot Blot](#)
- [Immunohistochemistry](#)
- [Immunofluorescence](#)
- [Immunoprecipitation](#)
- [Flow Cytometry](#)
- [Cell Culture](#)

PPFIBP1 Antibody (Center) - Images



All lanes : Anti-PPFIBP1 Antibody (Center) at 1:2000 dilution Lane 1: HepG2 whole cell lysate Lane 2: Jurkat whole cell lysate Lysates/proteins at 20 µg per lane. Secondary Goat Anti-Rabbit IgG, (H+L), Peroxidase conjugated at 1/10000 dilution. Predicted band size : 114 kDa Blocking/Dilution buffer: 5% NFDM/TBST.



Formalin-fixed and paraffin-embedded H.adrenal tissue reacted with PPFIBP1 Antibody (Center) (Cat#AP17453c).

PPFIBP1 Antibody (Center) - Background

The protein encoded by this gene is a member of the LAR protein-tyrosine phosphatase-interacting protein (liprin) family. Liprins interact with members of LAR family of transmembrane protein tyrosine phosphatases, which are known to be important for axon guidance and mammary gland development. It has been proposed that liprins are multivalent proteins that form complex structures and act as scaffolds for the recruitment and anchoring of LAR family of tyrosine phosphatases. This protein was found to interact with S100A4, a calcium-binding protein related to tumor invasiveness and metastasis. In vitro experiment demonstrated that the interaction inhibited the phosphorylation of this protein by protein kinase C and protein kinase CK2. Alternatively spliced transcript variants encoding distinct isoforms have been reported.

PPFIBP1 Antibody (Center) - References

Rose, J.E., et al. Mol. Med. 16 (7-8), 247-253 (2010) :
Norrmen, C., et al. Blood 115(4):906-909(2010)
Ewing, R.M., et al. Mol. Syst. Biol. 3, 89 (2007) :
Olsen, J.V., et al. Cell 127(3):635-648(2006)
Jin, J., et al. Curr. Biol. 14(16):1436-1450(2004)