

SDCCAG8 Antibody (N-term)
Affinity Purified Rabbit Polyclonal Antibody (Pab)
Catalog # AP17462A**Specification**

SDCCAG8 Antibody (N-term) - Product Information

Application	WB,E
Primary Accession	Q86SQ7
Other Accession	NP_006633.1
Reactivity	Human
Host	Rabbit
Clonality	Polyclonal
Isotype	Rabbit IgG
Calculated MW	82682
Antigen Region	188-215

SDCCAG8 Antibody (N-term) - Additional Information**Gene ID** 10806**Other Names**

Serologically defined colon cancer antigen 8, Antigen NY-CO-8, Centrosomal colon cancer autoantigen protein, hCCCAP, SDCCAG8, CCCAP, NPHP10

Target/Specificity

This SDCCAG8 antibody is generated from rabbits immunized with a KLH conjugated synthetic peptide between 188-215 amino acids from the N-terminal region of human SDCCAG8.

Dilution

WB~~1:1000

E~~Use at an assay dependent concentration.

Format

Purified polyclonal antibody supplied in PBS with 0.09% (W/V) sodium azide. This antibody is purified through a protein A column, followed by peptide affinity purification.

Storage

Maintain refrigerated at 2-8°C for up to 2 weeks. For long term storage store at -20°C in small aliquots to prevent freeze-thaw cycles.

Precautions

SDCCAG8 Antibody (N-term) is for research use only and not for use in diagnostic or therapeutic procedures.

SDCCAG8 Antibody (N-term) - Protein Information**Name** SDCCAG8

Synonyms CCCAP, NPHP10

Function Plays a role in the establishment of cell polarity and epithelial lumen formation (By similarity). Also plays an essential role in ciliogenesis and subsequent Hedgehog signaling pathway that requires the presence of intact primary cilia for pathway activation. Mechanistically, interacts with and mediates RABEP2 centrosomal localization which is critical for ciliogenesis (PubMed:[27224062](#)).

Cellular Location

Cytoplasm, cytoskeleton, microtubule organizing center, centrosome, centriole. Cytoplasm, cytoskeleton, microtubule organizing center, centrosome. Cytoplasm, cytoskeleton, cilium basal body. Cell junction. Note=Located at the distal ends of both centrioles and colocalizes to centrosomes throughout the cell cycle

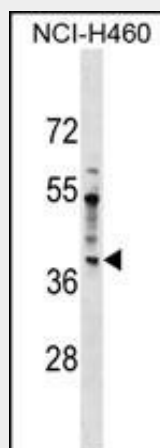
Tissue Location

Expressed in thymus, prostate, testis, ovary, small intestine, colon, mucosa, colon and renal cancer tumors

SDCCAG8 Antibody (N-term) - Protocols

Provided below are standard protocols that you may find useful for product applications.

- [Western Blot](#)
- [Blocking Peptides](#)
- [Dot Blot](#)
- [Immunohistochemistry](#)
- [Immunofluorescence](#)
- [Immunoprecipitation](#)
- [Flow Cytometry](#)
- [Cell Culture](#)

SDCCAG8 Antibody (N-term) - Images

SDCCAG8 Antibody (N-term) (Cat. #AP17462a) western blot analysis in NCI-H460 cell line lysates (35ug/lane). This demonstrates the SDCCAG8 antibody detected the SDCCAG8 protein (arrow).

SDCCAG8 Antibody (N-term) - Background

This gene encodes a centrosome associated protein. This protein may be involved in organizing the centrosome during

interphase and mitosis. Mutations in this gene are associated with retinal-renal ciliopathy.

SDCCAG8 Antibody (N-term) - References

Otto, E.A., et al. Nat. Genet. 42(10):840-850(2010)
Scherag, A., et al. PLoS Genet. 6 (4), E1000916 (2010) :
McCauley, J.L., et al. Genes Immun. 10(7):624-630(2009)
Kenedy, A.A., et al. Gene 303, 35-46 (2003) :
Scanlan, M.J., et al. Int. J. Cancer 76(5):652-658(1998)