

SMOC2 Antibody (C-term)
Affinity Purified Rabbit Polyclonal Antibody (Pab)
Catalog # AP17464b**Specification**

SMOC2 Antibody (C-term) - Product Information

Application	WB,E
Primary Accession	Q9H3U7
Other Accession	NP_001159884.1 , NP_071421.1
Reactivity	Human
Host	Rabbit
Clonality	Polyclonal
Isotype	Rabbit IgG
Calculated MW	49674
Antigen Region	405-431

SMOC2 Antibody (C-term) - Additional Information**Gene ID** 64094**Other Names**

SPARC-related modular calcium-binding protein 2, Secreted modular calcium-binding protein 2, SMOC-2, Smooth muscle-associated protein 2, SMAP-2, SMOC2, SMAP2

Target/Specificity

This SMOC2 antibody is generated from rabbits immunized with a KLH conjugated synthetic peptide between 405-431 amino acids from the C-terminal region of human SMOC2.

Dilution

WB~~1:1000

E~~Use at an assay dependent concentration.

Format

Purified polyclonal antibody supplied in PBS with 0.09% (W/V) sodium azide. This antibody is purified through a protein A column, followed by peptide affinity purification.

Storage

Maintain refrigerated at 2-8°C for up to 2 weeks. For long term storage store at -20°C in small aliquots to prevent freeze-thaw cycles.

Precautions

SMOC2 Antibody (C-term) is for research use only and not for use in diagnostic or therapeutic procedures.

SMOC2 Antibody (C-term) - Protein Information**Name** SMOC2

Synonyms SMAP2

Function Promotes matrix assembly and cell adhesiveness (By similarity). Can stimulate endothelial cell proliferation, migration, as well as angiogenesis.

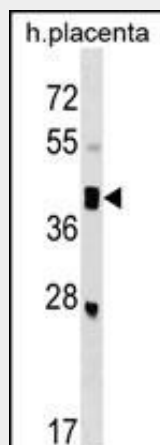
Cellular Location

Secreted, extracellular space, extracellular matrix, basement membrane

SMOC2 Antibody (C-term) - Protocols

Provided below are standard protocols that you may find useful for product applications.

- [Western Blot](#)
- [Blocking Peptides](#)
- [Dot Blot](#)
- [Immunohistochemistry](#)
- [Immunofluorescence](#)
- [Immunoprecipitation](#)
- [Flow Cytometry](#)
- [Cell Culture](#)

SMOC2 Antibody (C-term) - Images

SMOC2 Antibody (C-term) (Cat. #AP17464b) western blot analysis in human placenta tissue lysates (35ug/lane). This demonstrates the SMOC2 antibody detected the SMOC2 protein (arrow).

SMOC2 Antibody (C-term) - Background

This gene encodes a member of the SPARC family (secreted protein acidic and rich in cysteine/osteonectin/BM-40), which are highly expressed during embryogenesis and wound healing. The gene product is a matricellular protein which promotes matrix assembly and can stimulate endothelial cell proliferation and migration, as well as angiogenic activity. Associated with pulmonary function, this secretory gene product contains a Kazal domain, two thymoglobulin type-1 domains, and two EF-hand calcium-binding domains. The encoded protein may serve as a target for controlling angiogenesis in tumor growth and myocardial ischemia. Alternative splicing results in multiple transcript variants. [provided by RefSeq].

SMOC2 Antibody (C-term) - References

Rose, J.E., et al. Mol. Med. 16 (7-8), 247-253 (2010) :
Birlea, S.A., et al. J. Invest. Dermatol. 130(3):798-803(2010)
Wilk, J.B., et al. Am. J. Respir. Crit. Care Med. 175(6):554-560(2007)
Rocnik, E.F., et al. J. Biol. Chem. 281(32):22855-22864(2006)
Vannahme, C., et al. Biochem. J. 373 (PT 3), 805-814 (2003) :