

NAP1L3 Antibody (C-term)
Affinity Purified Rabbit Polyclonal Antibody (Pab)
Catalog # AP17474b**Specification**

NAP1L3 Antibody (C-term) - Product Information

Application	WB,E
Primary Accession	O99457
Other Accession	NP_004529.2
Reactivity	Human
Host	Rabbit
Clonality	Polyclonal
Isotype	Rabbit IgG
Calculated MW	57593
Antigen Region	432-459

NAP1L3 Antibody (C-term) - Additional Information**Gene ID** 4675**Other Names**

Nucleosome assembly protein 1-like 3, NAP1L3, BNAP

Target/Specificity

This NAP1L3 antibody is generated from rabbits immunized with a KLH conjugated synthetic peptide between 432-459 amino acids from the C-terminal region of human NAP1L3.

Dilution

WB~~1:1000

E~~Use at an assay dependent concentration.

Format

Purified polyclonal antibody supplied in PBS with 0.09% (W/V) sodium azide. This antibody is purified through a protein A column, followed by peptide affinity purification.

Storage

Maintain refrigerated at 2-8°C for up to 2 weeks. For long term storage store at -20°C in small aliquots to prevent freeze-thaw cycles.

Precautions

NAP1L3 Antibody (C-term) is for research use only and not for use in diagnostic or therapeutic procedures.

NAP1L3 Antibody (C-term) - Protein Information**Name** NAP1L3**Synonyms** BNAP

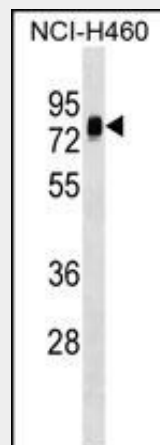
Cellular Location

Nucleus.

NAP1L3 Antibody (C-term) - Protocols

Provided below are standard protocols that you may find useful for product applications.

- [Western Blot](#)
- [Blocking Peptides](#)
- [Dot Blot](#)
- [Immunohistochemistry](#)
- [Immunofluorescence](#)
- [Immunoprecipitation](#)
- [Flow Cytometry](#)
- [Cell Culture](#)

NAP1L3 Antibody (C-term) - Images

NAP1L3 Antibody (C-term) (Cat. #AP17474b) western blot analysis in NCI-H460 cell line lysates (35ug/lane). This demonstrates the NAP1L3 antibody detected the NAP1L3 protein (arrow).

NAP1L3 Antibody (C-term) - Background

This gene encodes a member of the nucleosome assembly protein (NAP) family. It is linked closely to a region of genes responsible for several X-linked mental retardation syndromes. Alternatively spliced transcript variants have been found for this gene, but the biological validity of the variants has not been determined.

NAP1L3 Antibody (C-term) - References

Ross, M.T., et al. Nature 434(7031):325-337(2005)
Reddy, P.H., et al. Genomics 46(2):174-182(1997)
Watanabe, T.K., et al. Cytogenet. Cell Genet. 74(4):281-285(1996)