

PCDHA10 Antibody (C-term)
Affinity Purified Rabbit Polyclonal Antibody (Pab)
Catalog # AP17477B

Specification

PCDHA10 Antibody (C-term) - Product Information

Application	WB,E
Primary Accession	O9Y5I2
Other Accession	NP_061724.1 , NP_114065.1
Reactivity	Human
Host	Rabbit
Clonality	Polyclonal
Isotype	Rabbit IgG
Calculated MW	102875
Antigen Region	771-798

PCDHA10 Antibody (C-term) - Additional Information

Gene ID 56139

Other Names

Protocadherin alpha-10, PCDH-alpha-10, PCDHA10, CNRS8

Target/Specificity

This PCDHA10 antibody is generated from rabbits immunized with a KLH conjugated synthetic peptide between 771-798 amino acids from the C-terminal region of human PCDHA10.

Dilution

WB~~1:1000

Format

Purified polyclonal antibody supplied in PBS with 0.09% (W/V) sodium azide. This antibody is purified through a protein A column, followed by peptide affinity purification.

Storage

Maintain refrigerated at 2-8°C for up to 2 weeks. For long term storage store at -20°C in small aliquots to prevent freeze-thaw cycles.

Precautions

PCDHA10 Antibody (C-term) is for research use only and not for use in diagnostic or therapeutic procedures.

PCDHA10 Antibody (C-term) - Protein Information

Name PCDHA10

Synonyms CNRS8

Function Potential calcium-dependent cell-adhesion protein. May be involved in the establishment and maintenance of specific neuronal connections in the brain.

Cellular Location

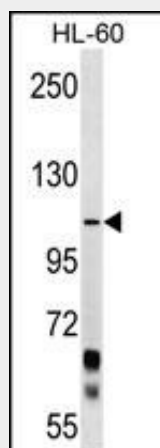
Cell membrane; Single-pass type I membrane protein

PCDHA10 Antibody (C-term) - Protocols

Provided below are standard protocols that you may find useful for product applications.

- [Western Blot](#)
- [Blocking Peptides](#)
- [Dot Blot](#)
- [Immunohistochemistry](#)
- [Immunofluorescence](#)
- [Immunoprecipitation](#)
- [Flow Cytometry](#)
- [Cell Culture](#)

PCDHA10 Antibody (C-term) - Images



PCDHA10 Antibody (C-term) (Cat. #AP17477b) western blot analysis in HL-60 cell line lysates (35ug/lane). This demonstrates the PCDHA10 antibody detected the PCDHA10 protein (arrow).

PCDHA10 Antibody (C-term) - Background

This gene is a member of the protocadherin alpha gene cluster, one of three related gene clusters tandemly linked on chromosome five that demonstrate an unusual genomic organization similar to that of B-cell and T-cell receptor gene clusters. The alpha gene cluster is composed of 15 cadherin superfamily genes related to the mouse CNR genes and consists of 13 highly similar and 2 more distantly related coding sequences. The tandem array of 15 N-terminal exons, or variable exons, are followed by downstream C-terminal exons, or constant exons, which are shared by all genes in the cluster. The large, uninterrupted N-terminal exons each encode six cadherin ectodomains while the C-terminal exons encode the cytoplasmic domain. These neural cadherin-like cell adhesion proteins are integral plasma membrane proteins that most likely play a critical role in the establishment and function of specific

cell-cell connections in the brain. Alternative splicing has been observed and additional variants have been suggested but their full-length nature has yet to be determined.

PCDHA10 Antibody (C-term) - References

Wu, C., et al. Proteomics 7(11):1775-1785(2007)
Schmutz, J., et al. Nature 431(7006):268-274(2004)
Wu, Q., et al. Genome Res. 11(3):389-404(2001)
Nollet, F., et al. J. Mol. Biol. 299(3):551-572(2000)
Yagi, T., et al. Genes Dev. 14(10):1169-1180(2000)