

**UBLCP1 Antibody (C-term)**  
**Affinity Purified Rabbit Polyclonal Antibody (Pab)**  
**Catalog # AP17480b****Specification**

---

**UBLCP1 Antibody (C-term) - Product Information**

Application	WB,E
Primary Accession	<a href="#">Q8WVY7</a>
Other Accession	<a href="#">Q5FWT7</a> , <a href="#">Q8BGR9</a> , <a href="#">Q2KJD7</a> , <a href="#">NP_659486.2</a>
Reactivity	Human
Predicted	Bovine, Mouse, Rat
Host	Rabbit
Clonality	Polyclonal
Isotype	Rabbit IgG
Calculated MW	36805
Antigen Region	222-248

**UBLCP1 Antibody (C-term) - Additional Information****Gene ID** 134510**Other Names**

Ubiquitin-like domain-containing CTD phosphatase 1, Nuclear proteasome inhibitor UBLCP1, UBLCP1

**Target/Specificity**

This UBLCP1 antibody is generated from rabbits immunized with a KLH conjugated synthetic peptide between 222-248 amino acids from the C-terminal region of human UBLCP1.

**Dilution**

WB~~1:1000

E~~Use at an assay dependent concentration.

**Format**

Purified polyclonal antibody supplied in PBS with 0.09% (W/V) sodium azide. This antibody is purified through a protein A column, followed by peptide affinity purification.

**Storage**

Maintain refrigerated at 2-8°C for up to 2 weeks. For long term storage store at -20°C in small aliquots to prevent freeze-thaw cycles.

**Precautions**

UBLCP1 Antibody (C-term) is for research use only and not for use in diagnostic or therapeutic procedures.

**UBLCP1 Antibody (C-term) - Protein Information****Name** UBLCP1

**Function** Dephosphorylates 26S nuclear proteasomes, thereby decreasing their proteolytic activity (PubMed:[21949367](#), PubMed:[28539385](#)). Recruited to the 19S regulatory particle of the 26S proteasome through its interaction with 19S component PSMD2/RPN1 (PubMed:[28539385](#)). Once recruited, dephosphorylates 19S component PSMC2/RPT1 which impairs PSMC2 ATPase activity and disrupts 26S proteasome assembly (PubMed:[28539385](#)). Has also been reported to stimulate the proteolytic activity of the 26S proteasome (PubMed:[32071216](#)).

#### **Cellular Location**

Nucleus Note=Colocalizes with nuclear proteasomes

#### **Tissue Location**

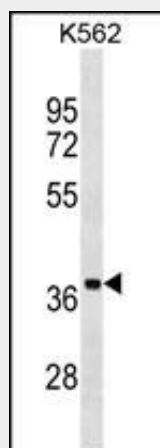
Broadly expressed, with highest levels in placenta, lung, testis and ovary. Up-regulated in tumor tissues

### **UBLCP1 Antibody (C-term) - Protocols**

Provided below are standard protocols that you may find useful for product applications.

- [Western Blot](#)
- [Blocking Peptides](#)
- [Dot Blot](#)
- [Immunohistochemistry](#)
- [Immunofluorescence](#)
- [Immunoprecipitation](#)
- [Flow Cytometry](#)
- [Cell Culture](#)

### **UBLCP1 Antibody (C-term) - Images**



UBLCP1 Antibody (C-term) (Cat. #AP17480b) western blot analysis in K562 cell line lysates (35ug/lane). This demonstrates the UBLCP1 antibody detected the UBLCP1 protein (arrow).

### **UBLCP1 Antibody (C-term) - Background**

UBLCP1 may specifically dephosphorylate 'Ser-5' of the heptad repeats YSPTSPS in the C-terminal domain of the largest RNA polymerase II subunit.

### **UBLCP1 Antibody (C-term) - References**

Nair, R.P., et al. Nat. Genet. 41(2):199-204(2009)

Zheng, H., et al. Biochem. Biophys. Res. Commun. 331(4):1401-1407(2005)