

GNL1 Antibody (Center)
Affinity Purified Rabbit Polyclonal Antibody (Pab)
Catalog # AP17486c

Specification

GNL1 Antibody (Center) - Product Information

Application	WB,E
Primary Accession	P36915
Other Accession	Q4R8D2 , NP_005266.2
Reactivity	Human
Predicted	Monkey
Host	Rabbit
Clonality	Polyclonal
Isotype	Rabbit IgG
Calculated MW	68661
Antigen Region	240-266

GNL1 Antibody (Center) - Additional Information

Gene ID 2794

Other Names

Guanine nucleotide-binding protein-like 1, GTP-binding protein HSR1, GNL1, HSR1

Target/Specificity

This GNL1 antibody is generated from rabbits immunized with a KLH conjugated synthetic peptide between 240-266 amino acids from the Central region of human GNL1.

Dilution

WB~~1:1000

E~~Use at an assay dependent concentration.

Format

Purified polyclonal antibody supplied in PBS with 0.09% (W/V) sodium azide. This antibody is purified through a protein A column, followed by peptide affinity purification.

Storage

Maintain refrigerated at 2-8°C for up to 2 weeks. For long term storage store at -20°C in small aliquots to prevent freeze-thaw cycles.

Precautions

GNL1 Antibody (Center) is for research use only and not for use in diagnostic or therapeutic procedures.

GNL1 Antibody (Center) - Protein Information

Name GNL1

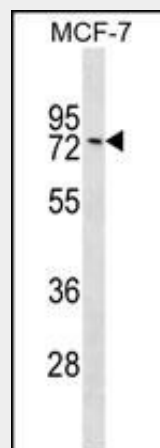
Synonyms HSR1

Function Possible regulatory or functional link with the histocompatibility cluster.

GNL1 Antibody (Center) - Protocols

Provided below are standard protocols that you may find useful for product applications.

- [Western Blot](#)
- [Blocking Peptides](#)
- [Dot Blot](#)
- [Immunohistochemistry](#)
- [Immunofluorescence](#)
- [Immunoprecipitation](#)
- [Flow Cytometry](#)
- [Cell Culture](#)

GNL1 Antibody (Center) - Images

GNL1 Antibody (Center) (Cat. #AP17486c) western blot analysis in MCF-7 cell line lysates (35ug/lane). This demonstrates the GNL1 antibody detected the GNL1 protein (arrow).

GNL1 Antibody (Center) - Background

The GNL1 gene, identified in the human major histocompatibility complex class I region, shows a high degree of similarity with its mouse counterpart. The GNL1 gene is located less than 2 kb centromeric to HLA-E, in the same transcriptional orientation. GNL1 is telomeric to HLA-B and HLA-C. [provided by RefSeq].

GNL1 Antibody (Center) - References

Barcellos, L.F., et al. PLoS Genet. 5 (10), E1000696 (2009) :
Paladini, F., et al. Arthritis Res. Ther. 11 (6), R171 (2009) :
Matsuoka, S., et al. Science 316(5828):1160-1166(2007)
Matsuoka, S., et al. Science 316(5828):1160-1166(2007)
Olsen, J.V., et al. Cell 127(3):635-648(2006)