

**SCG3 Antibody (C-term)**  
**Affinity Purified Rabbit Polyclonal Antibody (Pab)**  
**Catalog # AP17492b****Specification**

---

**SCG3 Antibody (C-term) - Product Information**

Application	WB,E
Primary Accession	<a href="#">O8WXD2</a>
Other Accession	<a href="#">NP_037375.2</a> , <a href="#">NP_001158729.1</a>
Reactivity	Human
Host	Rabbit
Clonality	Polyclonal
Isotype	Rabbit IgG
Calculated MW	53005
Antigen Region	378-406

**SCG3 Antibody (C-term) - Additional Information****Gene ID** 29106**Other Names**

Secretogranin-3, Secretogranin III, SgIII, SCG3

**Target/Specificity**

This SCG3 antibody is generated from rabbits immunized with a KLH conjugated synthetic peptide between 378-406 amino acids from the C-terminal region of human SCG3.

**Dilution**

WB~~1:1000

E~~Use at an assay dependent concentration.

**Format**

Purified polyclonal antibody supplied in PBS with 0.09% (W/V) sodium azide. This antibody is purified through a protein A column, followed by peptide affinity purification.

**Storage**

Maintain refrigerated at 2-8°C for up to 2 weeks. For long term storage store at -20°C in small aliquots to prevent freeze-thaw cycles.

**Precautions**

SCG3 Antibody (C-term) is for research use only and not for use in diagnostic or therapeutic procedures.

**SCG3 Antibody (C-term) - Protein Information****Name** SCG3**Function** Member of the granin protein family that regulates the biogenesis of secretory granules

(PubMed:[19357184](#)). Acts as a sorting receptor for intragranular proteins including chromogranin A/CHGA (By similarity). May also play a role in angiogenesis. Promotes endothelial proliferation, migration and tube formation through MEK/ERK signaling pathway (PubMed:[29154827](#)).

#### Cellular Location

Cytoplasmic vesicle, secretory vesicle {ECO:0000250|UniProtKB:P47868}. Cytoplasmic vesicle, secretory vesicle membrane {ECO:0000250|UniProtKB:P47868}; Peripheral membrane protein. Secreted. Note=Associated with the secretory granule membrane through direct binding to cholesterol-enriched lipid rafts. {ECO:0000250|UniProtKB:P47868}

#### Tissue Location

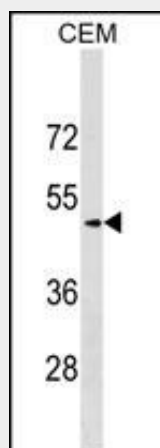
Detected in urine (at protein level) (PubMed:25326458). Expressed in brain, heart, kidney, liver and skeletal muscle.

### SCG3 Antibody (C-term) - Protocols

Provided below are standard protocols that you may find useful for product applications.

- [Western Blot](#)
- [Blocking Peptides](#)
- [Dot Blot](#)
- [Immunohistochemistry](#)
- [Immunofluorescence](#)
- [Immunoprecipitation](#)
- [Flow Cytometry](#)
- [Cell Culture](#)

### SCG3 Antibody (C-term) - Images



SCG3 Antibody (C-term) (Cat. #AP17492b) western blot analysis in CEM cell line lysates (35ug/lane). This demonstrates the SCG3 antibody detected the SCG3 protein (arrow).

### SCG3 Antibody (C-term) - Background

The protein encoded by this gene is a member of the chromogranin/secretogranin family of neuroendocrine secretory proteins. Granins may serve as precursors for biologically active peptides. Some granins have been shown to function as helper proteins in sorting and proteolytic processing of prohormones; however, the function of this protein is unknown. Two transcript

variants encoding different isoforms have been found for this gene.

### **SCG3 Antibody (C-term) - References**

Li, X., et al. J. Allergy Clin. Immunol. 125(2):328-335(2010)  
He, C., et al. Clin. Chim. Acta 402 (1-2), 102-106 (2009) :  
Stridsberg, M., et al. Regul. Pept. 148 (1-3), 95-98 (2008) :  
Tanabe, A., et al. J. Clin. Endocrinol. Metab. 92(3):1145-1154(2007)  
Sakai, Y., et al. Arch. Histol. Cytol. 67(1):57-64(2004)