

**BATF2 Antibody (N-term)**  
**Affinity Purified Rabbit Polyclonal Antibody (Pab)**  
**Catalog # AP17506a****Specification**

---

**BATF2 Antibody (N-term) - Product Information**

Application	WB,E
Primary Accession	<a href="#">Q8N1L9</a>
Other Accession	<a href="#">NP_612465.3</a>
Reactivity	Human
Host	Rabbit
Clonality	Polyclonal
Isotype	Rabbit IgG
Calculated MW	29398
Antigen Region	16-43

**BATF2 Antibody (N-term) - Additional Information****Gene ID** 116071**Other Names**

Basic leucine zipper transcriptional factor ATF-like 2, B-ATF-2, Suppressor of AP-1 regulated by IFN, SARI, BATF2

**Target/Specificity**

This BATF2 antibody is generated from rabbits immunized with a KLH conjugated synthetic peptide between 16-43 amino acids from the N-terminal region of human BATF2.

**Dilution**

WB~~1:1000

**Format**

Purified polyclonal antibody supplied in PBS with 0.09% (W/V) sodium azide. This antibody is purified through a protein A column, followed by peptide affinity purification.

**Storage**

Maintain refrigerated at 2-8°C for up to 2 weeks. For long term storage store at -20°C in small aliquots to prevent freeze-thaw cycles.

**Precautions**

BATF2 Antibody (N-term) is for research use only and not for use in diagnostic or therapeutic procedures.

**BATF2 Antibody (N-term) - Protein Information****Name** BATF2**Function** AP-1 family transcription factor that controls the differentiation of lineage-specific cells

in the immune system. Following infection, participates in the differentiation of CD8(+) thymic conventional dendritic cells in the immune system. Acts via the formation of a heterodimer with JUN family proteins that recognizes and binds DNA sequence 5'-TGA[CG]TCA-3' and regulates expression of target genes (By similarity). Selectively suppresses CCN1 transcription and hence blocks the downstream cell proliferation signals produced by CCN1 and inhibits CCN1-induced anchorage-independent growth and invasion in several cancer types, such as breast cancer, malignant glioma and metastatic melanoma. Possibly acts by interfering with AP-1 binding to CCN1 promoter.

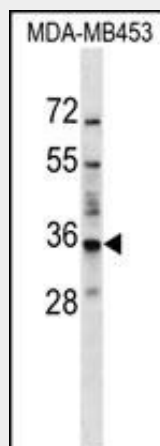
**Cellular Location**

Nucleus {ECO:0000255|PROSITE-ProRule:PRU00978}.

**BATF2 Antibody (N-term) - Protocols**

Provided below are standard protocols that you may find useful for product applications.

- [Western Blot](#)
- [Blocking Peptides](#)
- [Dot Blot](#)
- [Immunohistochemistry](#)
- [Immunofluorescence](#)
- [Immunoprecipitation](#)
- [Flow Cytometry](#)
- [Cell Culture](#)

**BATF2 Antibody (N-term) - Images**

BATF2 Antibody (N-term) (Cat. #AP17506a) western blot analysis in MDA-MB453 cell line lysates (35ug/lane). This demonstrates the BATF2 antibody detected the BATF2 protein (arrow).

**BATF2 Antibody (N-term) - Background**

MGC20410 belongs to the bZIP family. It contains one bZIP domain. There are two isoforms.

**BATF2 Antibody (N-term) - References**

Dash, R., et al. Oncogene 29(31):4412-4423(2010)  
Venkatesan, K., et al. Nat. Methods 6(1):83-90(2009)  
Su, Z.Z., et al. Proc. Natl. Acad. Sci. U.S.A. 105(52):20906-20911(2008)  
Lim, J., et al. Cell 125(4):801-814(2006)