

CCDC132 Antibody (C-term)
Affinity Purified Rabbit Polyclonal Antibody (Pab)
Catalog # AP17514B

Specification

CCDC132 Antibody (C-term) - Product Information

Application	WB,E
Primary Accession	O96JG6
Other Accession	O8CI71 , Q5ZKV9 , NP_078829.1 , NP_060137.2 , F1LSG8
Reactivity	Human
Predicted	Chicken, Mouse, Rat
Host	Rabbit
Clonality	Polyclonal
Isotype	Rabbit IgG
Calculated MW	111174
Antigen Region	904-930

CCDC132 Antibody (C-term) - Additional Information

Gene ID 55610

Other Names

Coiled-coil domain-containing protein 132, CCDC132, KIAA1861

Target/Specificity

This CCDC132 antibody is generated from rabbits immunized with a KLH conjugated synthetic peptide between 904-930 amino acids from the C-terminal region of human CCDC132.

Dilution

WB~~1:1000

E~~Use at an assay dependent concentration.

Format

Purified polyclonal antibody supplied in PBS with 0.09% (W/V) sodium azide. This antibody is purified through a protein A column, followed by peptide affinity purification.

Storage

Maintain refrigerated at 2-8°C for up to 2 weeks. For long term storage store at -20°C in small aliquots to prevent freeze-thaw cycles.

Precautions

CCDC132 Antibody (C-term) is for research use only and not for use in diagnostic or therapeutic procedures.

CCDC132 Antibody (C-term) - Protein Information

Name VPS50 ([HGNC:25956](#))

Function Acts as a component of the EARP complex that is involved in endocytic recycling. The EARP complex associates with Rab4-positive endosomes and promotes recycling of internalized transferrin receptor (TFRC) to the plasma membrane. Within the EARP complex, required to tether the complex to recycling endosomes. Not involved in retrograde transport from early and late endosomes to the trans-Golgi network (TGN).

Cellular Location

Recycling endosome. Membrane {ECO:0000250|UniProtKB:F1LSG8}. Note=Associates with membranes in an EIPR1-dependent manner. {ECO:0000250|UniProtKB:F1LSG8}

Tissue Location

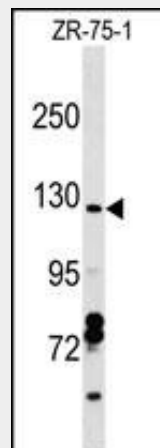
Ubiquitous, with higher expression in brain and skeletal muscle.

CCDC132 Antibody (C-term) - Protocols

Provided below are standard protocols that you may find useful for product applications.

- [Western Blot](#)
- [Blocking Peptides](#)
- [Dot Blot](#)
- [Immunohistochemistry](#)
- [Immunofluorescence](#)
- [Immunoprecipitation](#)
- [Flow Cytometry](#)
- [Cell Culture](#)

CCDC132 Antibody (C-term) - Images



CCDC132 Antibody (C-term) (Cat. #AP17514b) western blot analysis in ZR-75-1 cell line lysates (35ug/lane). This demonstrates the CCDC132 antibody detected the CCDC132 protein (arrow).

CCDC132 Antibody (C-term) - Background

The function of this protein remains unknown.

CCDC132 Antibody (C-term) - References

Bailey, S.D., et al. Diabetes Care 33(10):2250-2253(2010)
Talmud, P.J., et al. Am. J. Hum. Genet. 85(5):628-642(2009)
Lamesch, P., et al. Genomics 89(3):307-315(2007)

Olsen, J.V., et al. Cell 127(3):635-648(2006)

Beausoleil, S.A., et al. Proc. Natl. Acad. Sci. U.S.A. 101(33):12130-12135(2004)