

CRLF3 Antibody (C-term)
Affinity Purified Rabbit Polyclonal Antibody (Pab)
Catalog # AP17520b**Specification**

CRLF3 Antibody (C-term) - Product Information

Application	WB,E
Primary Accession	Q8IUJ8
Other Accession	Q9Z2L7 , NP_057070.3
Reactivity	Human
Predicted	Mouse
Host	Rabbit
Clonality	Polyclonal
Isotype	Rabbit IgG
Calculated MW	49766
Antigen Region	305-331

CRLF3 Antibody (C-term) - Additional Information**Gene ID** 51379**Other Names**

Cytokine receptor-like factor 3, Cytokine receptor-like molecule 9, CREME-9, Cytokine receptor-related protein 4, Type I cytokine receptor-like factor p48, CRLF3, CREME9, CRLM9, CYTOR4, P48

Target/Specificity

This CRLF3 antibody is generated from rabbits immunized with a KLH conjugated synthetic peptide between 305-331 amino acids from the C-terminal region of human CRLF3.

Dilution

WB~~1:1000

E~~Use at an assay dependent concentration.

Format

Purified polyclonal antibody supplied in PBS with 0.09% (W/V) sodium azide. This antibody is purified through a protein A column, followed by peptide affinity purification.

Storage

Maintain refrigerated at 2-8°C for up to 2 weeks. For long term storage store at -20°C in small aliquots to prevent freeze-thaw cycles.

Precautions

CRLF3 Antibody (C-term) is for research use only and not for use in diagnostic or therapeutic procedures.

CRLF3 Antibody (C-term) - Protein Information

Name CRLF3

Synonyms CREME9, CRLM9, CYTOR4, P48

Function May play a role in the negative regulation of cell cycle progression.

Cellular Location

Cytoplasm. Note=The EGFP- and MYC-tagged protein has been shown to be cytoplasmic

Tissue Location

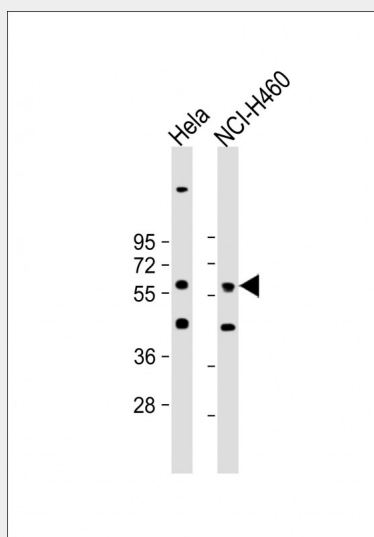
Expressed in several embryonic and adult tissues, including adult and fetal brain, liver, spleen and pancreas. Expressed in adult, but not fetal kidney. Expressed in skin and squamous cell carcinoma (SCC) and in several other cancer types. Also detected in lesion actinic keratosis (AK).

CRLF3 Antibody (C-term) - Protocols

Provided below are standard protocols that you may find useful for product applications.

- [Western Blot](#)
- [Blocking Peptides](#)
- [Dot Blot](#)
- [Immunohistochemistry](#)
- [Immunofluorescence](#)
- [Immunoprecipitation](#)
- [Flow Cytometry](#)
- [Cell Culture](#)

CRLF3 Antibody (C-term) - Images



All lanes : Anti-CRLF3 Antibody (C-term) at 1:1000 dilution Lane 1: HeLa whole cell lysate Lane 2: NCI-H460 whole cell lysate Lysates/proteins at 20 µg per lane. Secondary Goat Anti-Rabbit IgG, (H+L), Peroxidase conjugated at 1/10000 dilution. Predicted band size : 50 kDa Blocking/Dilution buffer: 5% NFDM/TBST.

CRLF3 Antibody (C-term) - Background

CRLF3 (Cytokine receptor-like factor 3) contains one fibronectin type-III domain. It is expressed in

skin and squamous cell carcinoma (SCC) and in lesion actinic keratosis (AK).

CRLF3 Antibody (C-term) - References

Johnatty, S.E., et al. PLoS Genet. 6 (7), E1001016 (2010) :
Zhao, J., et al. BMC Med. Genet. 11, 96 (2010) :
Yang, F., et al. Int. J. Biochem. Cell Biol. 41(11):2240-2250(2009)
Visser, R., et al. Am. J. Med. Genet. A 149A (4), 806-808 (2009) :
Gudbjartsson, D.F., et al. Nat. Genet. 40(5):609-615(2008)