

TPM2 Antibody (C-term)
Affinity Purified Rabbit Polyclonal Antibody (Pab)
Catalog # AP17546b

Specification

TPM2 Antibody (C-term) - Product Information

Application	WB,E
Primary Accession	P07951
Other Accession	P58775 , P58776 , P58774 , P19352 , Q5KR48 , NP_998839.1
Reactivity	Human
Predicted	Bovine, Chicken, Mouse, Rabbit, Rat
Host	Rabbit
Clonality	Polyclonal
Isotype	Rabbit IgG
Calculated MW	32851
Antigen Region	252-280

TPM2 Antibody (C-term) - Additional Information

Gene ID 7169

Other Names

Tropomyosin beta chain, Beta-tropomyosin, Tropomyosin-2, TPM2, TMSB

Target/Specificity

This TPM2 antibody is generated from rabbits immunized with a KLH conjugated synthetic peptide between 252-280 amino acids from the C-terminal region of human TPM2.

Dilution

WB~~1:1000

E~~Use at an assay dependent concentration.

Format

Purified polyclonal antibody supplied in PBS with 0.09% (W/V) sodium azide. This antibody is purified through a protein A column, followed by peptide affinity purification.

Storage

Maintain refrigerated at 2-8°C for up to 2 weeks. For long term storage store at -20°C in small aliquots to prevent freeze-thaw cycles.

Precautions

TPM2 Antibody (C-term) is for research use only and not for use in diagnostic or therapeutic procedures.

TPM2 Antibody (C-term) - Protein Information

Name TPM2

Synonyms TMSB

Function Binds to actin filaments in muscle and non-muscle cells. Plays a central role, in association with the troponin complex, in the calcium dependent regulation of vertebrate striated muscle contraction. Smooth muscle contraction is regulated by interaction with caldesmon. In non-muscle cells is implicated in stabilizing cytoskeleton actin filaments. The non-muscle isoform may have a role in agonist-mediated receptor internalization.

Cellular Location

Cytoplasm, cytoskeleton {ECO:0000250|UniProtKB:P58775}. Note=Associates with F-actin stress fibers. {ECO:0000250|UniProtKB:P58775}

Tissue Location

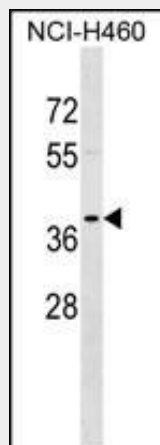
Present in primary breast cancer tissue, absent from normal breast tissue. {ECO:0000269|Ref.10}

TPM2 Antibody (C-term) - Protocols

Provided below are standard protocols that you may find useful for product applications.

- [Western Blot](#)
- [Blocking Peptides](#)
- [Dot Blot](#)
- [Immunohistochemistry](#)
- [Immunofluorescence](#)
- [Immunoprecipitation](#)
- [Flow Cytometry](#)
- [Cell Culture](#)

TPM2 Antibody (C-term) - Images



TPM2 Antibody (C-term) (Cat. #AP17546b) western blot analysis in NCI-H460 cell line lysates (35ug/lane). This demonstrates the TPM2 antibody detected the TPM2 protein (arrow).

TPM2 Antibody (C-term) - Background

This gene encodes beta-tropomyosin, a member of the actin filament binding protein family, and mainly expressed in slow, type 1 muscle fibers. Mutations in this gene can alter the expression of other sarcomeric tropomyosin proteins, and cause cap disease, nemaline myopathy and distal arthrogryposis syndromes.

Alternatively spliced transcript variants encoding different isoforms have been found for this gene.

TPM2 Antibody (C-term) - References

Bailey, S.D., et al. Diabetes Care 33(10):2250-2253(2010)
Martins-de-Souza, D., et al. J Psychiatr Res 44(14):989-991(2010)
Assinder, S.J., et al. Mol. Carcinog. 49(6):525-531(2010)
Ochala, J., et al. Proc. Natl. Acad. Sci. U.S.A. 107(21):9807-9812(2010)
Talmud, P.J., et al. Am. J. Hum. Genet. 85(5):628-642(2009)