

ZNF323 Antibody (Center)
Affinity Purified Rabbit Polyclonal Antibody (Pab)
Catalog # AP17548c**Specification**

ZNF323 Antibody (Center) - Product Information

Application	WB,E
Primary Accession	O96LW9
Other Accession	NP_001128687.1 , NP_001128688.1
Reactivity	Human
Host	Rabbit
Clonality	Polyclonal
Isotype	Rabbit IgG
Calculated MW	47293
Antigen Region	190-217

ZNF323 Antibody (Center) - Additional Information**Gene ID** 64288**Other Names**

Zinc finger and SCAN domain-containing protein 31, Zinc finger protein 323, ZSCAN31, ZNF310P, ZNF323

Target/Specificity

This ZNF323 antibody is generated from rabbits immunized with a KLH conjugated synthetic peptide between 190-217 amino acids from the Central region of human ZNF323.

Dilution

WB~~1:1000

Format

Purified polyclonal antibody supplied in PBS with 0.09% (W/V) sodium azide. This antibody is purified through a protein A column, followed by peptide affinity purification.

Storage

Maintain refrigerated at 2-8°C for up to 2 weeks. For long term storage store at -20°C in small aliquots to prevent freeze-thaw cycles.

Precautions

ZNF323 Antibody (Center) is for research use only and not for use in diagnostic or therapeutic procedures.

ZNF323 Antibody (Center) - Protein Information**Name** ZSCAN31**Synonyms** ZNF310P, ZNF323

Function May function as a transcription factor. May be involved in the development of multiple embryonic organs.

Cellular Location

Nucleus.

Tissue Location

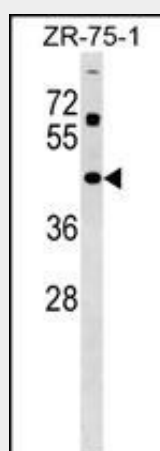
Expressed at high levels in the lung, liver, and kidney, while weakly expressed in intestine, brain, muscle, cholecyst, heart, and pancreas.

ZNF323 Antibody (Center) - Protocols

Provided below are standard protocols that you may find useful for product applications.

- [Western Blot](#)
- [Blocking Peptides](#)
- [Dot Blot](#)
- [Immunohistochemistry](#)
- [Immunofluorescence](#)
- [Immunoprecipitation](#)
- [Flow Cytometry](#)
- [Cell Culture](#)

ZNF323 Antibody (Center) - Images



ZNF323 Antibody (Center) (Cat. #AP17548c) western blot analysis in ZR-75-1 cell line lysates (35ug/lane). This demonstrates the ZNF323 antibody detected the ZNF323 protein (arrow).

ZNF323 Antibody (Center) - Background

ZNF323 is a member of the subfamily of C2H2 Kruppel-like zinc finger transcription factors that have a SCAN box domain (Pi et al., 2002 [PubMed 12147252]).

ZNF323 Antibody (Center) - References

Pi, H., et al. Biochem. Biophys. Res. Commun. 296(1):206-213(2002)