

**CRB3 Antibody (Center)**  
**Affinity Purified Rabbit Polyclonal Antibody (Pab)**  
**Catalog # AP17560c**

**Specification**

---

**CRB3 Antibody (Center) - Product Information**

Application	WB,E
Primary Accession	<a href="#">Q9BUF7</a>
Other Accession	<a href="#">Q8OZT4</a> , <a href="#">NP_631900.1</a> , <a href="#">NP_777377.1</a>
Reactivity	Human, Mouse
Host	Rabbit
Clonality	Polyclonal
Isotype	Rabbit IgG
Calculated MW	12854
Antigen Region	67-95

**CRB3 Antibody (Center) - Additional Information**

**Gene ID** 92359

**Other Names**

Protein crumbs homolog 3, CRB3

**Target/Specificity**

This CRB3 antibody is generated from rabbits immunized with a KLH conjugated synthetic peptide between 67-95 amino acids from the Central region of human CRB3.

**Dilution**

WB~~1:1000

**Format**

Purified polyclonal antibody supplied in PBS with 0.09% (W/V) sodium azide. This antibody is purified through a protein A column, followed by peptide affinity purification.

**Storage**

Maintain refrigerated at 2-8°C for up to 2 weeks. For long term storage store at -20°C in small aliquots to prevent freeze-thaw cycles.

**Precautions**

CRB3 Antibody (Center) is for research use only and not for use in diagnostic or therapeutic procedures.

**CRB3 Antibody (Center) - Protein Information**

**Name** CRB3 ([HGNC:20237](#))

**Function** Involved in the establishment of cell polarity in mammalian epithelial cells (PubMed:[12771187](#), PubMed:[14718572](#)). Regulates the morphogenesis of tight junctions

(PubMed:[12771187](#), PubMed:[14718572](#)). Involved in promoting phosphorylation and cytoplasmic retention of transcriptional coactivators YAP1 and WWTR1/TAZ which leads to suppression of TGF $\beta$ 1-dependent transcription of target genes such as CCN2/CTGF, SERPINE1/PAI1, SNAI1/SNAIL1 and SMAD7 (By similarity).

#### Cellular Location

Apical cell membrane; Single-pass type I membrane protein. Cell junction, tight junction.

Note=Localizes primarily to the apical membrane with a small fraction in the upper part of tight junctions of epithelial cells.

#### Tissue Location

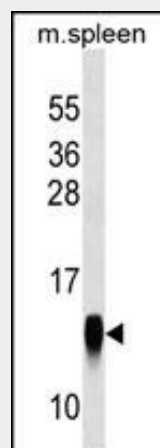
Preferentially expressed in epithelial tissues (PubMed:[14718572](#)). Expressed at high levels in lung, kidney, and colon (PubMed:[12527193](#), PubMed:[14718572](#)). Expressed at high levels in retina, colon and mammary glands (PubMed:[12527193](#)). Moderately expressed in liver, spleen, pancreas and prostate (PubMed:[12527193](#)). Moderately to weakly expressed in the placenta (PubMed:[14718572](#), PubMed:[12527193](#)) Weakly expressed in skeletal muscle and small intestine (PubMed:[14718572](#)).

### CRB3 Antibody (Center) - Protocols

Provided below are standard protocols that you may find useful for product applications.

- [Western Blot](#)
- [Blocking Peptides](#)
- [Dot Blot](#)
- [Immunohistochemistry](#)
- [Immunofluorescence](#)
- [Immunoprecipitation](#)
- [Flow Cytometry](#)
- [Cell Culture](#)

### CRB3 Antibody (Center) - Images



CRB3 Antibody (Center) (Cat. #AP17560c) western blot analysis in mouse spleen tissue lysates (35ug/lane). This demonstrates the CRB3 antibody detected the CRB3 protein (arrow).

### CRB3 Antibody (Center) - Background

This gene encodes a member of the Crumbs family of proteins. This protein may play a role in epithelial cell polarity

and is associated with tight junctions at the apical surface of epithelial cells. Alternate transcriptional splice variants, encoding different isoforms, have been characterized. [provided by RefSeq].

### **CRB3 Antibody (Center) - References**

Pardossi-Piquard, R., et al. Biochemistry 46(48):13704-13710(2007)  
Fan, S., et al. J. Cell Biol. 178(3):387-398(2007)  
Fogg, V.C., et al. J. Cell. Sci. 118 (PT 13), 2859-2869 (2005) :  
Lemmers, C., et al. Mol. Biol. Cell 15(3):1324-1333(2004)  
Roh, M.H., et al. J. Cell. Sci. 116 (PT 14), 2895-2906 (2003) :