

EVI2B Antibody (Center)
Affinity Purified Rabbit Polyclonal Antibody (Pab)
Catalog # AP17567C**Specification**

EVI2B Antibody (Center) - Product Information

Application	WB,E
Primary Accession	P34910
Other Accession	NP_006486.3
Reactivity	Human
Host	Rabbit
Clonality	Polyclonal
Isotype	Rabbit IgG
Calculated MW	48666
Antigen Region	283-313

EVI2B Antibody (Center) - Additional Information**Gene ID** 2124**Other Names**

Protein EVI2B, Ecotropic viral integration site 2B protein homolog, EVI-2B, CD361, EVI2B, EVDB

Target/Specificity

This EVI2B antibody is generated from rabbits immunized with a KLH conjugated synthetic peptide between 283-313 amino acids from the Central region of human EVI2B.

Dilution

WB~~1:1000

E~~Use at an assay dependent concentration.

Format

Purified polyclonal antibody supplied in PBS with 0.09% (W/V) sodium azide. This antibody is purified through a protein A column, followed by peptide affinity purification.

Storage

Maintain refrigerated at 2-8°C for up to 2 weeks. For long term storage store at -20°C in small aliquots to prevent freeze-thaw cycles.

Precautions

EVI2B Antibody (Center) is for research use only and not for use in diagnostic or therapeutic procedures.

EVI2B Antibody (Center) - Protein Information**Name** EVI2B {ECO:0000303|PubMed:1903357, ECO:0000312|HGNC:HGNC:3500}**Function** Required for granulocyte differentiation and functionality of hematopoietic progenitor

cells through the control of cell cycle progression and survival of hematopoietic progenitor cells.

Cellular Location

Membrane; Single-pass type I membrane protein.

Tissue Location

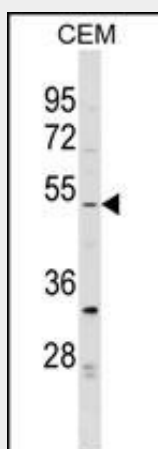
Bone marrow, peripheral blood mononuclear cells, fibroblasts and Epstein-Barr virus-transformed lymphoblastoid cell lines. Strongly expressed in granulocytic cells, and weakly on lymphocytes cells.

EVI2B Antibody (Center) - Protocols

Provided below are standard protocols that you may find useful for product applications.

- [Western Blot](#)
- [Blocking Peptides](#)
- [Dot Blot](#)
- [Immunohistochemistry](#)
- [Immunofluorescence](#)
- [Immunoprecipitation](#)
- [Flow Cytometry](#)
- [Cell Culture](#)

EVI2B Antibody (Center) - Images



EVI2B Antibody (Center) (Cat. #AP17567c) western blot analysis in CEM cell line lysates (35ug/lane). This demonstrates the EVI2B antibody detected the EVI2B protein (arrow).

EVI2B Antibody (Center) - Background

EVI2B (Ecotropic viral integration site 2B) may function as an oncogene in retrovirus-induced myeloid tumors and may have a role in leukemogenesis.

EVI2B Antibody (Center) - References

- Douglas, J., et al. Nat. Genet. 39(8):963-965(2007)
Xu, G., et al. Genomics 13(3):537-542(1992)
Wallace, M.R., et al. Nature 353(6347):864-866(1991)
Cawthon, R.M., et al. Genomics 9(3):446-460(1991)
Viskochil, D., et al. Mol. Cell. Biol. 11(2):906-912(1991)