

LARP4 Antibody (C-term)
Affinity Purified Rabbit Polyclonal Antibody (Pab)
Catalog # AP17575b

Specification

LARP4 Antibody (C-term) - Product Information

Application	WB,E
Primary Accession	Q71RC2
Other Accession	NP_001164279.1
Reactivity	Human, Mouse
Host	Rabbit
Clonality	Polyclonal
Isotype	Rabbit IgG
Calculated MW	80596
Antigen Region	689-717

LARP4 Antibody (C-term) - Additional Information

Gene ID 113251

Other Names

La-related protein 4, La ribonucleoprotein domain family member 4, LARP4

Target/Specificity

This LARP4 antibody is generated from rabbits immunized with a KLH conjugated synthetic peptide between 689-717 amino acids from the C-terminal region of human LARP4.

Dilution

WB~~1:1000

E~~Use at an assay dependent concentration.

Format

Purified polyclonal antibody supplied in PBS with 0.09% (W/V) sodium azide. This antibody is purified through a protein A column, followed by peptide affinity purification.

Storage

Maintain refrigerated at 2-8°C for up to 2 weeks. For long term storage store at -20°C in small aliquots to prevent freeze-thaw cycles.

Precautions

LARP4 Antibody (C-term) is for research use only and not for use in diagnostic or therapeutic procedures.

LARP4 Antibody (C-term) - Protein Information

Name LARP4

Function RNA binding protein that binds to the poly-A tract of mRNA molecules

(PubMed:[21098120](#)). Associates with the 40S ribosomal subunit and with polysomes (PubMed:[21098120](#)). Plays a role in the regulation of mRNA translation (PubMed:[21098120](#)). Plays a role in the regulation of cell morphology and cytoskeletal organization (PubMed:[21834987](#), PubMed:[27615744](#)).

Cellular Location

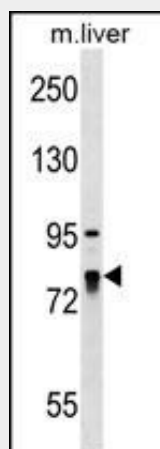
Cytoplasm, Stress granule. Cytoplasm, cytosol Note=Localized throughout the cytosol. Partially localized in stress granules in response to arsenite treatment

LARP4 Antibody (C-term) - Protocols

Provided below are standard protocols that you may find useful for product applications.

- [Western Blot](#)
- [Blocking Peptides](#)
- [Dot Blot](#)
- [Immunohistochemistry](#)
- [Immunofluorescence](#)
- [Immunoprecipitation](#)
- [Flow Cytometry](#)
- [Cell Culture](#)

LARP4 Antibody (C-term) - Images



LARP4 Antibody (C-term) (Cat. #AP17575b) western blot analysis in mouse liver tissue lysates (35ug/lane). This demonstrates the LARP4 antibody detected the LARP4 protein (arrow).

LARP4 Antibody (C-term) - Background

LARP4 contains one HTH La-type RNA-binding domain and one RRM (RNA recognition motif) domain. There are four named isoforms.

LARP4 Antibody (C-term) - References

Puigdecanet, E., et al. Cancer Genet. Cytogenet. 167(1):39-42(2006)
Kralovics, R., et al. Blood Rev. 19(1):1-13(2005)