

PPFIA2 Antibody (Center)
Affinity Purified Rabbit Polyclonal Antibody (Pab)
Catalog # AP17576c

Specification

PPFIA2 Antibody (Center) - Product Information

Application	WB,E
Primary Accession	O75334
Other Accession	Q8BSS9 , NP_003616.2
Reactivity	Human, Mouse
Host	Rabbit
Clonality	Polyclonal
Isotype	Rabbit IgG
Calculated MW	143291
Antigen Region	571-599

PPFIA2 Antibody (Center) - Additional Information

Gene ID 8499

Other Names

Liprin-alpha-2, Protein tyrosine phosphatase receptor type f polypeptide-interacting protein alpha-2, PTPRF-interacting protein alpha-2, PPFIA2

Target/Specificity

This PPFIA2 antibody is generated from rabbits immunized with a KLH conjugated synthetic peptide between 571-599 amino acids from the Central region of human PPFIA2.

Dilution

WB~~1:1000

Format

Purified polyclonal antibody supplied in PBS with 0.09% (W/V) sodium azide. This antibody is purified through a protein A column, followed by peptide affinity purification.

Storage

Maintain refrigerated at 2-8°C for up to 2 weeks. For long term storage store at -20°C in small aliquots to prevent freeze-thaw cycles.

Precautions

PPFIA2 Antibody (Center) is for research use only and not for use in diagnostic or therapeutic procedures.

PPFIA2 Antibody (Center) - Protein Information

Name PPFIA2

Function Alters PTPRF cellular localization and induces PTPRF clustering. May regulate the

disassembly of focal adhesions. May localize receptor-like tyrosine phosphatases type 2A at specific sites on the plasma membrane, possibly regulating their interaction with the extracellular environment and their association with substrates. In neuronal cells, is a scaffolding protein in the dendritic spines which acts as immobile postsynaptic post able to recruit KIF1A-driven dense core vesicles to dendritic spines (PubMed:[30021165](#)).

Cellular Location

Cytoplasm. Cell surface. Cell projection, dendritic spine. Note=Colocalizes with PTPRF at the cell surface

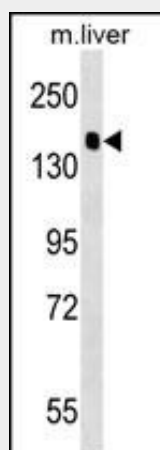
Tissue Location

Expressed only in brain.

PPFIA2 Antibody (Center) - Protocols

Provided below are standard protocols that you may find useful for product applications.

- [Western Blot](#)
- [Blocking Peptides](#)
- [Dot Blot](#)
- [Immunohistochemistry](#)
- [Immunofluorescence](#)
- [Immunoprecipitation](#)
- [Flow Cytometry](#)
- [Cell Culture](#)

PPFIA2 Antibody (Center) - Images

PPFIA2 Antibody (Center) (Cat. #AP17576c) western blot analysis in mouse liver tissue lysates (35ug/lane). This demonstrates the PPFIA2 antibody detected the PPFIA2 protein (arrow).

PPFIA2 Antibody (Center) - Background

The protein encoded by this gene is a member of the LAR protein-tyrosine phosphatase-interacting protein (liprin) family. Liprins interact with members of LAR family of transmembrane protein tyrosine phosphatases, which are known to be important for axon guidance and mammary gland development. It has been proposed that liprins are multivalent proteins that form complex structures and act as scaffolds for the recruitment and anchoring of LAR

family of tyrosine phosphatases. This protein is most closely related to PPFIA1, a liprin family member known to interact with the protein phosphatase LAR. The expression of this gene is found to be downregulated by androgens in a prostate cancer cell line.

PPFIA2 Antibody (Center) - References

Rose, J. Phd, et al. Mol. Med. (2010) In press :
Ko, J., et al. J. Biol. Chem. 278(43):42377-42385(2003)
Ko, J., et al. J. Neurosci. 23(5):1667-1677(2003)
Fujinami, K., et al. Int. J. Mol. Med. 10(2):173-176(2002)
Wyszynski, M., et al. Neuron 34(1):39-52(2002)