

**TTDN1 Antibody (C-term)**  
**Affinity Purified Rabbit Polyclonal Antibody (Pab)**  
**Catalog # AP17580b****Specification**

---

**TTDN1 Antibody (C-term) - Product Information**

Application	WB,E
Primary Accession	<a href="#">Q8TAP9</a>
Other Accession	<a href="#">Q9D011</a> , <a href="#">NP_619646.1</a>
Reactivity	Human
Predicted	Mouse
Host	Rabbit
Clonality	Polyclonal
Isotype	Rabbit IgG
Calculated MW	19147
Antigen Region	151-177

**TTDN1 Antibody (C-term) - Additional Information****Gene ID** 136647**Other Names**

M-phase-specific PLK1-interacting protein, TTD non-photosensitive 1 protein, MPLKIP, C7orf11, TTDN1

**Target/Specificity**

This TTDN1 antibody is generated from rabbits immunized with a KLH conjugated synthetic peptide between 151-177 amino acids from the C-terminal region of human TTDN1.

**Dilution**

WB~~1:1000

**Format**

Purified polyclonal antibody supplied in PBS with 0.09% (W/V) sodium azide. This antibody is purified through a protein A column, followed by peptide affinity purification.

**Storage**

Maintain refrigerated at 2-8°C for up to 2 weeks. For long term storage store at -20°C in small aliquots to prevent freeze-thaw cycles.

**Precautions**

TTDN1 Antibody (C-term) is for research use only and not for use in diagnostic or therapeutic procedures.

**TTDN1 Antibody (C-term) - Protein Information****Name** MPLKIP

**Synonyms** C7orf11, TTDN1

**Function** May play a role in maintenance of cell cycle integrity by regulating mitosis or cytokinesis.

**Cellular Location**

Nucleus. Cytoplasm. Cytoplasm, cytoskeleton, microtubule organizing center, centrosome. Note=The subcellular location is regulated during cell cycle. During interphase located in the nucleus. During mitosis located at the centrosome and dispersed in the cytoplasm. During telophase located in the midbody. Colocalizes with PLK1 at the centrosome in M phase

**Tissue Location**

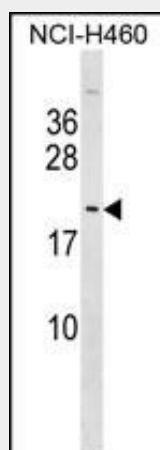
Expressed at highest levels in liver and kidney; intermediate expression in skeletal muscle, pancreas, heart and placenta; low expression in brain and lung. Expressed in epidermis and hair follicles.

**TTDN1 Antibody (C-term) - Protocols**

Provided below are standard protocols that you may find useful for product applications.

- [Western Blot](#)
- [Blocking Peptides](#)
- [Dot Blot](#)
- [Immunohistochemistry](#)
- [Immunofluorescence](#)
- [Immunoprecipitation](#)
- [Flow Cytometry](#)
- [Cell Culture](#)

**TTDN1 Antibody (C-term) - Images**



TTDN1 Antibody (C-term) (Cat. #AP17580b) western blot analysis in NCI-H460 cell line lysates (35ug/lane). This demonstrates the TTDN1 antibody detected the TTDN1 protein (arrow).

**TTDN1 Antibody (C-term) - Background**

The protein encoded by this gene localizes to the centrosome during mitosis and to the midbody during cytokinesis. The protein is phosphorylated by cyclin-dependent kinase 1 during mitosis and subsequently interacts with polo-like kinase 1. The

protein is thought to function in regulating mitosis and cytokinesis. Mutations in this gene result in nonphotosensitive trichothiodystrophy.

#### **TTDN1 Antibody (C-term) - References**

Zhang, Y., et al. Cell. Mol. Life Sci. 64(5):632-640(2007)  
Lamesch, P., et al. Genomics 89(3):307-315(2007)  
Botta, E., et al. Hum. Mutat. 28(1):92-96(2007)  
Olsen, J.V., et al. Cell 127(3):635-648(2006)  
Nakabayashi, K., et al. Am. J. Hum. Genet. 76(3):510-516(2005)