

**PGM5 Antibody (C-term)**  
**Affinity Purified Rabbit Polyclonal Antibody (Pab)**  
**Catalog # AP17589b**

**Specification**

---

**PGM5 Antibody (C-term) - Product Information**

Application	WB,E
Primary Accession	<a href="#">Q15124</a>
Other Accession	<a href="#">NP_068800.2</a>
Reactivity	Human
Host	Rabbit
Clonality	Polyclonal
Isotype	Rabbit IgG
Calculated MW	62225
Antigen Region	404-430

**PGM5 Antibody (C-term) - Additional Information**

**Gene ID** 5239

**Other Names**

Phosphoglucomutase-like protein 5, Aciculin, Phosphoglucomutase-related protein, PGM-RP, PGM5, PGMRP

**Target/Specificity**

This PGM5 antibody is generated from rabbits immunized with a KLH conjugated synthetic peptide between 404-430 amino acids from the C-terminal region of human PGM5.

**Dilution**

WB~~1:1000

E~~Use at an assay dependent concentration.

**Format**

Purified polyclonal antibody supplied in PBS with 0.09% (W/V) sodium azide. This antibody is purified through a protein A column, followed by peptide affinity purification.

**Storage**

Maintain refrigerated at 2-8°C for up to 2 weeks. For long term storage store at -20°C in small aliquots to prevent freeze-thaw cycles.

**Precautions**

PGM5 Antibody (C-term) is for research use only and not for use in diagnostic or therapeutic procedures.

**PGM5 Antibody (C-term) - Protein Information**

**Name** PGM5 ([HGNC:8908](#))

**Synonyms** PGMRP

**Function** Component of adherens-type cell-cell and cell-matrix junctions (PubMed:[8175905](#)). Has no phosphoglucosyltransferase activity in vitro (PubMed:[8175905](#)).

**Cellular Location**

Cell junction, adherens junction. Cytoplasm, cytoskeleton. Cell membrane, sarcolemma {ECO:0000250|UniProtKB:Q8BZF8}. Note=Concentrated in focal contacts at the ends of actin bundles, and associated with actin filaments

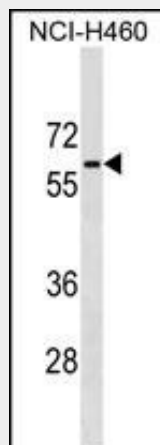
**Tissue Location**

Detected in smooth and cardiac muscle at high levels and in skeletal muscle at low level. Present in other tissues due to vascular or other smooth muscle component. Low levels are present in liver, kidney, skin and brain (at protein level)

**PGM5 Antibody (C-term) - Protocols**

Provided below are standard protocols that you may find useful for product applications.

- [Western Blot](#)
- [Blocking Peptides](#)
- [Dot Blot](#)
- [Immunohistochemistry](#)
- [Immunofluorescence](#)
- [Immunoprecipitation](#)
- [Flow Cytometry](#)
- [Cell Culture](#)

**PGM5 Antibody (C-term) - Images**

PGM5 Antibody (C-term) (Cat. #AP17589b) western blot analysis in NCI-H460 cell line lysates (35ug/lane). This demonstrates the PGM5 antibody detected the PGM5 protein (arrow).

**PGM5 Antibody (C-term) - Background**

Phosphoglucosyltransferases (EC 5.2.2.2.), such as PGM5, are phosphotransferases involved in interconversion of glucose-1-phosphate and glucose-6-phosphate. PGM activity is essential in formation of carbohydrates from glucose-6-phosphate and in formation of glucose-6-phosphate from galactose and glycogen

(Edwards et al., 1995 [PubMed 8586438]).

#### **PGM5 Antibody (C-term) - References**

Wakayama, Y., et al. Acta Neuropathol. 99(6):654-662(2000)  
Moiseeva, E.P., et al. Eur. J. Biochem. 248(3):634-643(1997)  
Moiseeva, E.P., et al. Eur. J. Biochem. 235 (1-2), 103-113 (1996) :  
Edwards, Y.H., et al. Genomics 30(2):350-353(1995)  
Belkin, A.M., et al. Exp. Cell Res. 221(1):132-140(1995)