

RELT Antibody (C-term)
Affinity Purified Rabbit Polyclonal Antibody (Pab)
Catalog # AP17596b**Specification**

RELT Antibody (C-term) - Product Information

Application	WB,E
Primary Accession	O969Z4
Other Accession	NP_689408.1 , NP_116260.2
Reactivity	Human
Host	Rabbit
Clonality	Polyclonal
Isotype	Rabbit IgG
Calculated MW	46092
Antigen Region	387-413

RELT Antibody (C-term) - Additional Information**Gene ID** 84957**Other Names**

Tumor necrosis factor receptor superfamily member 19L, Receptor expressed in lymphoid tissues, RELT, TNFRSF19L

Target/Specificity

This RELT antibody is generated from rabbits immunized with a KLH conjugated synthetic peptide between 387-413 amino acids from the C-terminal region of human RELT.

Dilution

WB~~1:1000

E~~Use at an assay dependent concentration.

Format

Purified polyclonal antibody supplied in PBS with 0.09% (W/V) sodium azide. This antibody is purified through a protein A column, followed by peptide affinity purification.

Storage

Maintain refrigerated at 2-8°C for up to 2 weeks. For long term storage store at -20°C in small aliquots to prevent freeze-thaw cycles.

Precautions

RELT Antibody (C-term) is for research use only and not for use in diagnostic or therapeutic procedures.

RELT Antibody (C-term) - Protein Information**Name** RELT

Synonyms TNFRSF19L

Function May play a role in apoptosis (PubMed:[19969290](#), PubMed:[28688764](#)). Induces activation of MAPK14/p38 and MAPK8/JNK MAPK cascades, when overexpressed (PubMed:[16530727](#)). Involved in dental enamel formation (PubMed:[30506946](#)).

Cellular Location

Cell membrane; Single-pass type I membrane protein Cytoplasm. Cytoplasm, perinuclear region

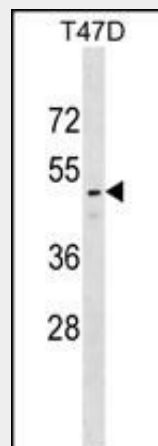
Tissue Location

Spleen, lymph node, brain, breast and peripheral blood leukocytes (at protein level) (PubMed:[28688764](#)). Expressed highly in bone marrow and fetal liver. Very low levels in skeletal muscle, testis and colon. Not detected in kidney and pancreas

REL T Antibody (C-term) - Protocols

Provided below are standard protocols that you may find useful for product applications.

- [Western Blot](#)
- [Blocking Peptides](#)
- [Dot Blot](#)
- [Immunohistochemistry](#)
- [Immunofluorescence](#)
- [Immunoprecipitation](#)
- [Flow Cytometry](#)
- [Cell Culture](#)

REL T Antibody (C-term) - Images

REL T Antibody (C-term) (Cat. #AP17596b) western blot analysis in T47D cell line lysates (35ug/lane). This demonstrates the REL T antibody detected the REL T protein (arrow).

REL T Antibody (C-term) - Background

The protein encoded by this gene is a member of the TNF-receptor superfamily. This receptor is especially abundant in hematologic tissues. It has been shown to activate the NF-kappaB pathway and selectively bind TNF receptor-associated factor 1 (TRAF1). This receptor is capable of stimulating T-cell proliferation in the presence of CD3 signaling, which suggests its

regulatory role in immune response. Two alternatively spliced transcript variants of this gene encoding the same protein have been reported.

RELT Antibody (C-term) - References

Cusick, J.K., et al. Cell. Immunol. 261(1):1-8(2010)
Polek, T.C., et al. Biochem. Biophys. Res. Commun. 349(3):1016-1024(2006)
Bossen, C., et al. J. Biol. Chem. 281(20):13964-13971(2006)
Cusick, J.K., et al. Biochem. Biophys. Res. Commun. 340(2):535-543(2006)
Zhang, Z., et al. Protein Sci. 13(10):2819-2824(2004)