

RGL4 Antibody (N-term)
Affinity Purified Rabbit Polyclonal Antibody (Pab)
Catalog # AP17597A**Specification**

RGL4 Antibody (N-term) - Product Information

Application	WB,E
Primary Accession	Q8IZJ4
Other Accession	NP_705843.1
Reactivity	Human
Host	Rabbit
Clonality	Polyclonal
Isotype	Rabbit IgG
Calculated MW	52346
Antigen Region	98-125

RGL4 Antibody (N-term) - Additional Information**Gene ID** 266747**Other Names**

Ral-GDS-related protein, hRGR, Ral guanine nucleotide dissociation stimulator-like 4, RalGDS-like 4, RGL4, RGR

Target/Specificity

This RGL4 antibody is generated from rabbits immunized with a KLH conjugated synthetic peptide between 98-125 amino acids from the N-terminal region of human RGL4.

Dilution

WB~~1:1000

E~~Use at an assay dependent concentration.

Format

Purified polyclonal antibody supplied in PBS with 0.09% (W/V) sodium azide. This antibody is purified through a protein A column, followed by peptide affinity purification.

Storage

Maintain refrigerated at 2-8°C for up to 2 weeks. For long term storage store at -20°C in small aliquots to prevent freeze-thaw cycles.

Precautions

RGL4 Antibody (N-term) is for research use only and not for use in diagnostic or therapeutic procedures.

RGL4 Antibody (N-term) - Protein Information**Name** RGL4

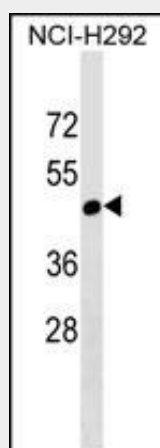
Synonyms RGR**Cellular Location**

Cytoplasmic vesicle.

RGL4 Antibody (N-term) - Protocols

Provided below are standard protocols that you may find useful for product applications.

- [Western Blot](#)
- [Blocking Peptides](#)
- [Dot Blot](#)
- [Immunohistochemistry](#)
- [Immunofluorescence](#)
- [Immunoprecipitation](#)
- [Flow Cytometry](#)
- [Cell Culture](#)

RGL4 Antibody (N-term) - Images

RGL4 Antibody (N-term) (Cat. #AP17597a) western blot analysis in NCI-H292 cell line lysates (35ug/lane). This demonstrates the RGL4 antibody detected the RGL4 protein (arrow).

RGL4 Antibody (N-term) - Background

Ral GDS (Ral guanine nucleotide dissociation stimulator) is a guanine nucleotide exchange factor (GEF) that activates Ral and is implicated in oncogenic Ras-induced cell transformation. RGL4 (ral guanine nucleotide dissociation stimulator-like 4), also known as Rgr, is a 473 amino acid protein that localizes to the cytoplasmic vesicle of cells. Belonging to the GEF family of proteins, RGL4 induces phosphorylation of ERKs, p38 and JNK kinases, and it increases the levels of GTP bound forms of Ral and Ras. Ras activation is crucial for the transforming activity of RGL4. Due to its similarity to Ral GDS, RGL4 may be implicated in carcinogenesis.

RGL4 Antibody (N-term) - References

Hernandez-Munoz, I., et al. Cancer Res. 63(14):4188-4195(2003)
Hernandez-Munoz, I., et al. Oncogene 19(23):2745-2757(2000)
Dunham, I., et al. Nature 402(6761):489-495(1999)
D'Adamo, D.R., et al. Oncogene 14(11):1295-1305(1997)