

RPL10L Antibody (N-term)
Affinity Purified Rabbit Polyclonal Antibody (Pab)
Catalog # AP17603a**Specification**

RPL10L Antibody (N-term) - Product Information

Application	WB,E
Primary Accession	Q96L21
Other Accession	Q6PDV7 , Q29195 , Q6ZWV3 , Q4R7Y2 , P27635 , Q09533 , Q9XSI3 , P86048 , Q4R4D3 , Q2TBW8 , NP_542784.1 , A8D8X1 , B7NZO2
Reactivity	Human
Predicted	Bovine, Monkey, Mouse, C.Elegans, Pig, Rabbit, Rat, Sheep
Host	Rabbit
Clonality	Polyclonal
Isotype	Rabbit IgG
Calculated MW	24519
Antigen Region	9-35

RPL10L Antibody (N-term) - Additional Information**Gene ID** 140801**Other Names**

60S ribosomal protein L10-like, RPL10L

Target/Specificity

This RPL10L antibody is generated from rabbits immunized with a KLH conjugated synthetic peptide between 9-35 amino acids from the N-terminal region of human RPL10L.

Dilution

WB~~1:1000

E~~Use at an assay dependent concentration.

Format

Purified polyclonal antibody supplied in PBS with 0.09% (W/V) sodium azide. This antibody is purified through a protein A column, followed by peptide affinity purification.

Storage

Maintain refrigerated at 2-8°C for up to 2 weeks. For long term storage store at -20°C in small aliquots to prevent freeze-thaw cycles.

Precautions

RPL10L Antibody (N-term) is for research use only and not for use in diagnostic or therapeutic procedures.

RPL10L Antibody (N-term) - Protein Information

Name RPL10L {ECO:0000303|PubMed:12490704, ECO:0000312|HGNC:HGNC:17976}

Function Testis-specific component of the ribosome, which is required for the transition from prophase to metaphase in male meiosis I (By similarity). Compensates for the inactivated X-linked RPL10 paralog during spermatogenesis (PubMed:[12490704](#)). The ribosome is a large ribonucleoprotein complex responsible for the synthesis of proteins in the cell (PubMed:[23636399](#), PubMed:[25901680](#), PubMed:[32669547](#)). The male germ cell-specific ribosome displays a ribosomal polypeptide exit tunnel of distinct size and charge states compared with the classical ribosome (By similarity). It is responsible for regulating the biosynthesis and folding of a subset of male germ-cell-specific proteins that are essential for the formation of sperm (By similarity).

Cellular Location

Cytoplasm

Tissue Location

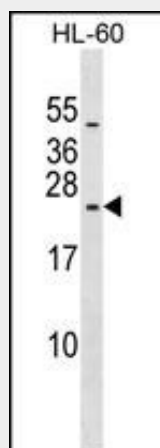
Almost testis-specific (PubMed:12490704, PubMed:19333399, PubMed:28502657). Also expressed in pre- and postmenopausal ovary (PubMed:19333399).

RPL10L Antibody (N-term) - Protocols

Provided below are standard protocols that you may find useful for product applications.

- [Western Blot](#)
- [Blocking Peptides](#)
- [Dot Blot](#)
- [Immunohistochemistry](#)
- [Immunofluorescence](#)
- [Immunoprecipitation](#)
- [Flow Cytometry](#)
- [Cell Culture](#)

RPL10L Antibody (N-term) - Images



RPL10L Antibody (N-term) (Cat. #AP17603a) western blot analysis in HL-60 cell line lysates (35ug/lane). This demonstrates the RPL10L antibody detected the RPL10L protein (arrow).

RPL10L Antibody (N-term) - Background

This gene encodes a protein sharing sequence similarity with ribosomal protein L10. It is not currently known whether the

encoded protein is a functional ribosomal protein or whether it has evolved a function that is independent of the ribosome. This gene is intronless.

RPL10L Antibody (N-term) - References

Balasubramanian, S., et al. Genome Biol. 10 (1), R2 (2009) :
Uechi, T., et al. Nucleic Acids Res. 30(24):5369-5375(2002)
Simpson, J.C., et al. EMBO Rep. 1(3):287-292(2000)