

SERINC2 Antibody (Center)
Affinity Purified Rabbit Polyclonal Antibody (Pab)
Catalog # AP17605c**Specification**

SERINC2 Antibody (Center) - Product Information

Application	WB,E
Primary Accession	O96SA4
Other Accession	NP_849196.2
Reactivity	Human
Host	Rabbit
Clonality	Polyclonal
Isotype	Rabbit IgG
Calculated MW	50742
Antigen Region	289-316

SERINC2 Antibody (Center) - Additional Information**Gene ID** 347735**Other Names**

Serine incorporator 2, Tumor differentially expressed protein 2-like, SERINC2, TDE2L

Target/Specificity

This SERINC2 antibody is generated from rabbits immunized with a KLH conjugated synthetic peptide between 289-316 amino acids from the Central region of human SERINC2.

Dilution

WB~~1:1000

E~~Use at an assay dependent concentration.

Format

Purified polyclonal antibody supplied in PBS with 0.09% (W/V) sodium azide. This antibody is purified through a protein A column, followed by peptide affinity purification.

Storage

Maintain refrigerated at 2-8°C for up to 2 weeks. For long term storage store at -20°C in small aliquots to prevent freeze-thaw cycles.

Precautions

SERINC2 Antibody (Center) is for research use only and not for use in diagnostic or therapeutic procedures.

SERINC2 Antibody (Center) - Protein Information**Name** SERINC2 ([HGNC:23231](#))**Synonyms** TDE2L

Function Non-ATP-dependent, non-specific lipid transporter for phosphatidylserine, phosphatidylcholine, and phosphatidylethanolamine. Functions as a scramblase that flips lipids in both directions across the membrane. In contrast to SERINC3 and SERINC5, has no effect on HIV-1 particles infectivity.

Cellular Location

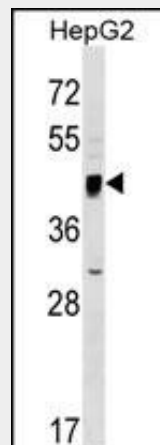
Cell membrane; Multi-pass membrane protein

SERINC2 Antibody (Center) - Protocols

Provided below are standard protocols that you may find useful for product applications.

- [Western Blot](#)
- [Blocking Peptides](#)
- [Dot Blot](#)
- [Immunohistochemistry](#)
- [Immunofluorescence](#)
- [Immunoprecipitation](#)
- [Flow Cytometry](#)
- [Cell Culture](#)

SERINC2 Antibody (Center) - Images



SERINC2 Antibody (Center) (Cat. #AP17605c) western blot analysis in HepG2 cell line lysates (35ug/lane). This demonstrates the SERINC2 antibody detected the SERINC2 protein (arrow).

SERINC2 Antibody (Center) - Background

SERINC2 is a member of a family of carrier proteins, Serinc 1-5, that incorporate a polar amino acid serine into membranes and facilitate the synthesis of two serine-derived lipids, phosphatidylserine and sphingolipids. The Serinc family is a unique protein family that shows no amino acid homology to other proteins but is highly conserved among eukaryotes. The members contain 11 transmembrane domains, similar to amino acid transporters.

SERINC2 Antibody (Center) - References

Hillier, L.W., et al. Nature 434(7034):724-731(2005)
Player, A., et al. Int. J. Cancer 107(2):238-243(2003)
Clark, H.F., et al. Genome Res. 13(10):2265-2270(2003)