

**SNX33 Antibody (C-term)**  
**Affinity Purified Rabbit Polyclonal Antibody (Pab)**  
**Catalog # AP17608b****Specification**

---

**SNX33 Antibody (C-term) - Product Information**

Application	WB,E
Primary Accession	<a href="#">O8WV41</a>
Other Accession	<a href="#">O4VAA7</a> , <a href="#">NP_695003.1</a>
Reactivity	Human
Predicted	Mouse
Host	Rabbit
Clonality	Polyclonal
Isotype	Rabbit IgG
Calculated MW	65265
Antigen Region	389-416

**SNX33 Antibody (C-term) - Additional Information****Gene ID** 257364**Other Names**

Sorting nexin-33, SH3 and PX domain-containing protein 3, SNX33, SH3PX3, SH3PXD3C, SNX30

**Target/Specificity**

This SNX33 antibody is generated from rabbits immunized with a KLH conjugated synthetic peptide between 389-416 amino acids from the C-terminal region of human SNX33.

**Dilution**

WB~~1:1000

**Format**

Purified polyclonal antibody supplied in PBS with 0.09% (W/V) sodium azide. This antibody is purified through a protein A column, followed by peptide affinity purification.

**Storage**

Maintain refrigerated at 2-8°C for up to 2 weeks. For long term storage store at -20°C in small aliquots to prevent freeze-thaw cycles.

**Precautions**

SNX33 Antibody (C-term) is for research use only and not for use in diagnostic or therapeutic procedures.

**SNX33 Antibody (C-term) - Protein Information****Name** SNX33**Synonyms** SH3PX3, SH3PXD3C, SNX30

**Function** Plays a role in the reorganization of the cytoskeleton, endocytosis and cellular vesicle trafficking via its interactions with membranes, WASL, DNM1 and DNM2. Acts both during interphase and at the end of mitotic cell divisions. Required for efficient progress through mitosis and cytokinesis. Required for normal formation of the cleavage furrow at the end of mitosis. Modulates endocytosis of cell-surface proteins, such as APP and PRNP; this then modulates the secretion of APP and PRNP peptides. Promotes membrane tubulation (in vitro). May promote the formation of macropinosomes.

#### **Cellular Location**

Cytoplasm, cytosol. Membrane; Peripheral membrane protein; Cytoplasmic side. Cytoplasmic vesicle membrane; Peripheral membrane protein; Cytoplasmic side. Note=Primarily cytosolic, but a minor proportion is membrane-bound (PubMed:18353773). Not associated with membranes (PubMed:21048941).

#### **Tissue Location**

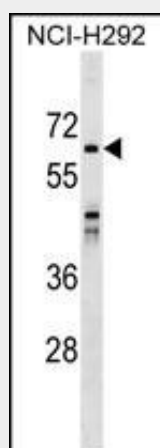
Detected in heart and pancreas.

### **SNX33 Antibody (C-term) - Protocols**

Provided below are standard protocols that you may find useful for product applications.

- [Western Blot](#)
- [Blocking Peptides](#)
- [Dot Blot](#)
- [Immunohistochemistry](#)
- [Immunofluorescence](#)
- [Immunoprecipitation](#)
- [Flow Cytometry](#)
- [Cell Culture](#)

### **SNX33 Antibody (C-term) - Images**



SNX33 Antibody (C-term) (Cat. #AP17608b) western blot analysis in NCI-H292 cell line lysates (35ug/lane). This demonstrates the SNX33 antibody detected the SNX33 protein (arrow).

### **SNX33 Antibody (C-term) - Background**

SNX33 belongs to the sorting nexin family. It contains a PX (phox homology) domain and an SH3 domain. It interacts with ADAM15.

**SNX33 Antibody (C-term) - References**

Kleino, I., et al. J. Cell. Biochem. 108(4):877-885(2009)  
Zhang, J., et al. J. Biol. Chem. 284(32):21659-21669(2009)  
Voss, M., et al. BMC Immunol. 10, 53 (2009) :  
Heiseke, A., et al. Traffic 9(7):1116-1129(2008)  
Schobel, S., et al. J. Biol. Chem. 283(21):14257-14268(2008)