

**SPO11 Antibody (C-term)**  
**Affinity Purified Rabbit Polyclonal Antibody (Pab)**  
**Catalog # AP17609b**

**Specification**

---

**SPO11 Antibody (C-term) - Product Information**

Application	WB,E
Primary Accession	<a href="#">O9Y5K1</a>
Other Accession	<a href="#">NP_937998.1</a>
Reactivity	Human
Host	Rabbit
Clonality	Polyclonal
Isotype	Rabbit IgG
Calculated MW	44537
Antigen Region	299-326

**SPO11 Antibody (C-term) - Additional Information**

**Gene ID** 23626

**Other Names**

Meiotic recombination protein SPO11, Cancer/testis antigen 35, CT35, SPO11

**Target/Specificity**

This SPO11 antibody is generated from rabbits immunized with a KLH conjugated synthetic peptide between 299-326 amino acids from the C-terminal region of human SPO11.

**Dilution**

WB~~1:1000

**Format**

Purified polyclonal antibody supplied in PBS with 0.09% (W/V) sodium azide. This antibody is purified through a protein A column, followed by peptide affinity purification.

**Storage**

Maintain refrigerated at 2-8°C for up to 2 weeks. For long term storage store at -20°C in small aliquots to prevent freeze-thaw cycles.

**Precautions**

SPO11 Antibody (C-term) is for research use only and not for use in diagnostic or therapeutic procedures.

**SPO11 Antibody (C-term) - Protein Information**

**Name** SPO11

**Function** Component of a topoisomerase 6 complex specifically required for meiotic recombination. Together with TOP6BL, mediates DNA cleavage that forms the double-strand

breaks (DSB) that initiate meiotic recombination. The complex promotes relaxation of negative and positive supercoiled DNA and DNA decatenation through cleavage and ligation cycles. Essential for the phosphorylation of SMC3, HORMAD1 and HORMAD2.

**Cellular Location**

Nucleus.

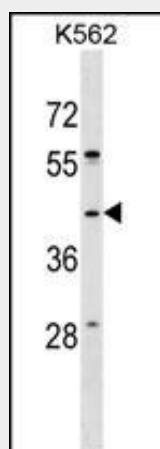
**Tissue Location**

Highly expressed in testis.

**SPO11 Antibody (C-term) - Protocols**

Provided below are standard protocols that you may find useful for product applications.

- [Western Blot](#)
- [Blocking Peptides](#)
- [Dot Blot](#)
- [Immunohistochemistry](#)
- [Immunofluorescence](#)
- [Immunoprecipitation](#)
- [Flow Cytometry](#)
- [Cell Culture](#)

**SPO11 Antibody (C-term) - Images**

SPO11 Antibody (C-term) (Cat. #AP17609b) western blot analysis in K562 cell line lysates (35ug/lane). This demonstrates the SPO11 antibody detected the SPO11 protein (arrow).

**SPO11 Antibody (C-term) - Background**

Meiotic recombination and chromosome segregation require the formation of double-strand breaks (DSBs) in paired chromosome homologs. During meiosis in yeast, a meiotic recombination protein is covalently-linked to the 5' end of DSBs and is essential for the formation of DSBs. The protein encoded by this gene is similar in sequence and conserved features to the yeast meiotic recombination protein. The encoded protein belongs to the TOP6A protein family. Several transcript variants encoding different isoforms have been found for this gene, but the full-length nature of only two of them have been described.

**SPO11 Antibody (C-term) - References**

Rose, J.E., et al. Mol. Med. 16 (7-8), 247-253 (2010) :  
Aston, K.I., et al. Hum. Reprod. 25(6):1383-1397(2010)  
Mandon-Pepin, B., et al. Eur. J. Endocrinol. 158(1):107-115(2008)  
Christensen, G.L., et al. Fertil. Steril. 84(3):758-760(2005)  
Deloukas, P., et al. Nature 414(6866):865-871(2001)