

**TMOD4 Antibody (Center)**  
**Affinity Purified Rabbit Polyclonal Antibody (Pab)**  
**Catalog # AP17611c**

## Specification

---

### TMOD4 Antibody (Center) - Product Information

Application	WB,E
Primary Accession	<a href="#">O9NZO9</a>
Other Accession	<a href="#">O9JLH8</a> , <a href="#">O0VC48</a> , <a href="#">NP_037485.2</a>
Reactivity	Human
Predicted	Bovine, Mouse
Host	Rabbit
Clonality	Polyclonal
Isotype	Rabbit IgG
Calculated MW	39335
Antigen Region	150-176

### TMOD4 Antibody (Center) - Additional Information

**Gene ID** 29765

#### Other Names

Tropomodulin-4, Skeletal muscle tropomodulin, Sk-Tmod, TMOD4

#### Target/Specificity

This TMOD4 antibody is generated from rabbits immunized with a KLH conjugated synthetic peptide between 150-176 amino acids from the Central region of human TMOD4.

#### Dilution

WB~~1:1000

E~~Use at an assay dependent concentration.

#### Format

Purified polyclonal antibody supplied in PBS with 0.09% (W/V) sodium azide. This antibody is purified through a protein A column, followed by peptide affinity purification.

#### Storage

Maintain refrigerated at 2-8°C for up to 2 weeks. For long term storage store at -20°C in small aliquots to prevent freeze-thaw cycles.

#### Precautions

TMOD4 Antibody (Center) is for research use only and not for use in diagnostic or therapeutic procedures.

### TMOD4 Antibody (Center) - Protein Information

**Name** TMOD4

**Function** Blocks the elongation and depolymerization of the actin filaments at the pointed end. The Tmod/TM complex contributes to the formation of the short actin protofilament, which in turn defines the geometry of the membrane skeleton.

**Cellular Location**

Cytoplasm, cytoskeleton. Note=In myofibrils with sarcomeric structure, localizes to the pointed end of actin thin filaments (PubMed:25250574).

**Tissue Location**

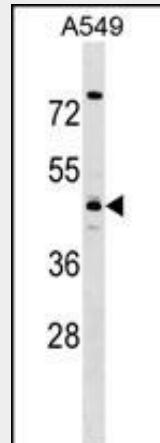
Highly expressed in skeletal muscle.

**TMOD4 Antibody (Center) - Protocols**

Provided below are standard protocols that you may find useful for product applications.

- [Western Blot](#)
- [Blocking Peptides](#)
- [Dot Blot](#)
- [Immunohistochemistry](#)
- [Immunofluorescence](#)
- [Immunoprecipitation](#)
- [Flow Cytometry](#)
- [Cell Culture](#)

**TMOD4 Antibody (Center) - Images**



TMOD4 Antibody (Center) (Cat. #AP17611c) western blot analysis in A549 cell line lysates (35ug/lane). This demonstrates the TMOD4 antibody detected the TMOD4 protein (arrow).

**TMOD4 Antibody (Center) - Background**

TMOD4 blocks the elongation and depolymerization of the actin filaments at the pointed end. The Tmod/TM complex contributes to the formation of the short actin protofilament, which in turn defines the geometry of the membrane skeleton.

**TMOD4 Antibody (Center) - References**

Lamesch, P., et al. Genomics 89(3):307-315(2007)  
Cox, P.R., et al. BMC Genomics 2 (1), 7 (2001) :  
Cox, P.R., et al. Genomics 63(1):97-107(2000)

Almenar-Queralt, A., et al. J. Biol. Chem. 274(40):28466-28475(1999)