

ASB10 Antibody (N-term)
Affinity Purified Rabbit Polyclonal Antibody (Pab)
Catalog # AP17629a**Specification**

ASB10 Antibody (N-term) - Product Information

Application	WB,E
Primary Accession	Q8WXI3
Other Accession	NP_001135931.2
Reactivity	Human
Host	Rabbit
Clonality	Polyclonal
Isotype	Rabbit IgG
Calculated MW	50894
Antigen Region	76-103

ASB10 Antibody (N-term) - Additional Information**Gene ID** 136371**Other Names**

Ankyrin repeat and SOCS box protein 10, ASB-10, ASB10

Target/Specificity

This ASB10 antibody is generated from rabbits immunized with a KLH conjugated synthetic peptide between 76-103 amino acids from the N-terminal region of human ASB10.

Dilution

WB~~1:1000

E~~Use at an assay dependent concentration.

Format

Purified polyclonal antibody supplied in PBS with 0.09% (W/V) sodium azide. This antibody is purified through a protein A column, followed by peptide affinity purification.

Storage

Maintain refrigerated at 2-8°C for up to 2 weeks. For long term storage store at -20°C in small aliquots to prevent freeze-thaw cycles.

Precautions

ASB10 Antibody (N-term) is for research use only and not for use in diagnostic or therapeutic procedures.

ASB10 Antibody (N-term) - Protein Information**Name** ASB10**Function** May be a substrate-recognition component of a SCF-like ECS (Elongin-Cullin-SOCS-box

protein) E3 ubiquitin-protein ligase complex which mediates the ubiquitination and subsequent proteasomal degradation of target proteins.

Cellular Location

Cytoplasm. Nucleus. Note=In the ciliary body, it is detected in the cytoplasm and perinuclear region of the pigmented ciliary epithelial layer. In the retina, it is detected in the nuclei of retinal ganglion cells

Tissue Location

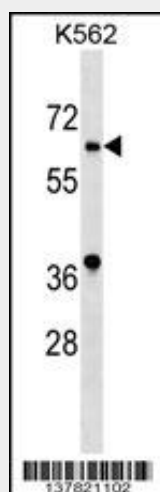
Expressed in the eye. The highest expression is observed in the iris, with moderate levels in the trabecular meshwork (TM), the lamina, and the optic nerve; slightly lower levels in the ciliary body, retina, and choroid; and very low levels in the lens

ASB10 Antibody (N-term) - Protocols

Provided below are standard protocols that you may find useful for product applications.

- [Western Blot](#)
- [Blocking Peptides](#)
- [Dot Blot](#)
- [Immunohistochemistry](#)
- [Immunofluorescence](#)
- [Immunoprecipitation](#)
- [Flow Cytometry](#)
- [Cell Culture](#)

ASB10 Antibody (N-term) - Images



ASB10 Antibody (N-term) (Cat. #AP17629a) western blot analysis in K562 cell line lysates (35ug/lane). This demonstrates the ASB10 antibody detected the ASB10 protein (arrow).

ASB10 Antibody (N-term) - Background

The protein encoded by this gene is a member of the ankyrin repeat and SOCS box-containing (ASB) family of proteins. The SOCS box serves to couple suppressor of cytokine signaling (SOCS) proteins and their binding partners with the elongin B and C complex, possibly targeting them for degradation. Multiple alternatively spliced transcript variants have been described for

this gene.

ASB10 Antibody (N-term) - References

Kohroki, J., et al. FEBS Lett. 579(30):6796-6802(2005)

Kile, B.T., et al. Trends Biochem. Sci. 27(5):235-241(2002)