

CRISP1 Antibody (C-term)
Affinity Purified Rabbit Polyclonal Antibody (Pab)
Catalog # AP17635b**Specification**

CRISP1 Antibody (C-term) - Product Information

| | |
|-------------------|---|
| Application | WB,E |
| Primary Accession | P54107 |
| Other Accession | NP_001122.2 , NP_733758.1 |
| Reactivity | Human |
| Host | Rabbit |
| Clonality | Polyclonal |
| Isotype | Rabbit IgG |
| Calculated MW | 28481 |
| Antigen Region | 162-191 |

CRISP1 Antibody (C-term) - Additional Information**Gene ID** 167**Other Names**

Cysteine-rich secretory protein 1, CRISP-1, AEG-like protein, ARP, Acidic epididymal glycoprotein homolog, CRISP1, AEGL1

Target/Specificity

This CRISP1 antibody is generated from rabbits immunized with a KLH conjugated synthetic peptide between 162-191 amino acids from the C-terminal region of human CRISP1.

Dilution

WB~~1:1000

E~~Use at an assay dependent concentration.

Format

Purified polyclonal antibody supplied in PBS with 0.09% (W/V) sodium azide. This antibody is purified through a protein A column, followed by peptide affinity purification.

Storage

Maintain refrigerated at 2-8°C for up to 2 weeks. For long term storage store at -20°C in small aliquots to prevent freeze-thaw cycles.

Precautions

CRISP1 Antibody (C-term) is for research use only and not for use in diagnostic or therapeutic procedures.

CRISP1 Antibody (C-term) - Protein Information**Name** CRISP1

Synonyms AEGL1

Function May have a role in sperm-egg fusion and maturation.

Cellular Location

Note=Located in the lumen and epithelium of distal ductus efferentes and epididymal ducts, and on the postacrosomal region of the sperm head

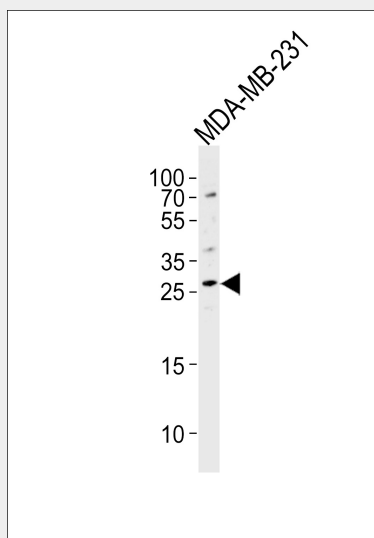
Tissue Location

Caput, corpus, and cauda regions of the epididymis, the ductus deferens, sperm and seminal plasma

CRISP1 Antibody (C-term) - Protocols

Provided below are standard protocols that you may find useful for product applications.

- [Western Blot](#)
- [Blocking Peptides](#)
- [Dot Blot](#)
- [Immunohistochemistry](#)
- [Immunofluorescence](#)
- [Immunoprecipitation](#)
- [Flow Cytometry](#)
- [Cell Culture](#)

CRISP1 Antibody (C-term) - Images

Western blot analysis of lysate from MDA-MB-231 cell line, using CRISP1 Antibody (C-term)(Cat. #AP17635b). AP17635b was diluted at 1:1000 at each lane. A goat anti-rabbit IgG H&L(HRP) at 1:5000 dilution was used as the secondary antibody. Lysate at 35ug per lane.

CRISP1 Antibody (C-term) - Background

Fertilization consists of a sequence of specific cell-cell interactions culminating in the fusion of the sperm and egg plasma membranes. Recognition, binding, and fusion occur through the interaction of complementary molecules that are localized to

specific domains of the sperm and egg plasma membranes. In the sperm, the postacrosomal region or equatorial segment is involved in sperm-egg plasma membrane fusion. The protein encoded by this gene is a member of the cysteine-rich secretory protein (CRISP) family. This protein is expressed in the epididymis, is secreted into the epididymal lumen, and binds to the postacrosomal region of the sperm head where it plays a role at fertilization in sperm-egg fusion through complementary sites localized on the egg surface. Two isoforms are encoded by transcript variants of this gene.

CRISP1 Antibody (C-term) - References

Mungall, A.J., et al. Nature 425(6960):805-811(2003)
Evans, J.P. Hum. Reprod. Update 8(4):297-311(2002)
Cuasnicu, P.S., et al. Arch. Med. Res. 32(6):614-618(2001)
Cohen, D.J., et al. Biol. Reprod. 65(4):1000-1005(2001)
Kirchhoff, C. Rev. Reprod. 3(2):86-95(1998)