

**SNTB1 Antibody (Center)**  
**Affinity Purified Rabbit Polyclonal Antibody (Pab)**  
**Catalog # AP17655c**

**Specification**

---

**SNTB1 Antibody (Center) - Product Information**

Application	WB,E
Primary Accession	<a href="#">Q13884</a>
Other Accession	<a href="#">Q99L88</a> , <a href="#">NP_066301.1</a>
Reactivity	Human, Mouse
Host	Rabbit
Clonality	Polyclonal
Isotype	Rabbit IgG
Calculated MW	58061
Antigen Region	243-271

**SNTB1 Antibody (Center) - Additional Information**

**Gene ID** 6641

**Other Names**

Beta-1-syntrophin, 59 kDa dystrophin-associated protein A1 basic component 1, DAPA1B, BSYN2, Syntrophin-2, Tax interaction protein 43, TIP-43, SNTB1, SNT2B1

**Target/Specificity**

This SNTB1 antibody is generated from rabbits immunized with a KLH conjugated synthetic peptide between 243-271 amino acids from the Central region of human SNTB1.

**Dilution**

WB~~1:1000

**Format**

Purified polyclonal antibody supplied in PBS with 0.09% (W/V) sodium azide. This antibody is purified through a protein A column, followed by peptide affinity purification.

**Storage**

Maintain refrigerated at 2-8°C for up to 2 weeks. For long term storage store at -20°C in small aliquots to prevent freeze-thaw cycles.

**Precautions**

SNTB1 Antibody (Center) is for research use only and not for use in diagnostic or therapeutic procedures.

**SNTB1 Antibody (Center) - Protein Information**

**Name** SNTB1

**Synonyms** SNT2B1

**Function** Adapter protein that binds to and probably organizes the subcellular localization of a variety of membrane proteins. May link various receptors to the actin cytoskeleton and the dystrophin glycoprotein complex.

**Cellular Location**

Cell membrane, sarcolemma; Peripheral membrane protein; Cytoplasmic side. Cell junction. Cytoplasm, cytoskeleton. Note=In skeletal muscle, it localizes at the cytoplasmic side of the sarcolemmal membrane and at neuromuscular junctions

**Tissue Location**

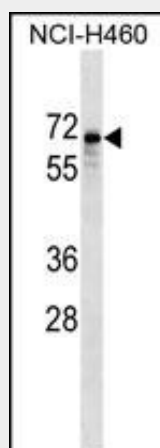
Ubiquitous..

**SNTB1 Antibody (Center) - Protocols**

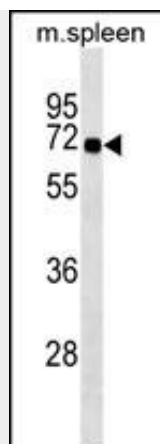
Provided below are standard protocols that you may find useful for product applications.

- [Western Blot](#)
- [Blocking Peptides](#)
- [Dot Blot](#)
- [Immunohistochemistry](#)
- [Immunofluorescence](#)
- [Immunoprecipitation](#)
- [Flow Cytometry](#)
- [Cell Culture](#)

**SNTB1 Antibody (Center) - Images**



SNTB1 Antibody (Center) (Cat. #AP17655c) western blot analysis in NCI-H460 cell line lysates (35ug/lane). This demonstrates the SNTB1 antibody detected the SNTB1 protein (arrow).



SNTB1 Antibody (Center) (Cat. #AP17655c) western blot analysis in mouse spleen tissue lysates (35ug/lane). This demonstrates the SNTB1 antibody detected the SNTB1 protein (arrow).

#### **SNTB1 Antibody (Center) - Background**

Dystrophin is a large, rod-like cytoskeletal protein found at the inner surface of muscle fibers. Dystrophin is missing in Duchenne Muscular Dystrophy patients and is present in reduced amounts in Becker Muscular Dystrophy patients. The protein encoded by this gene is a peripheral membrane protein found associated with dystrophin and dystrophin-related proteins. This gene is a member of the syntrophin gene family, which contains at least two other structurally-related genes.

#### **SNTB1 Antibody (Center) - References**

Rothenberg, M.E., et al. Nat. Genet. 42(4):289-291(2010)  
Sugiyama, N., et al. Mol. Cell Proteomics 6(6):1103-1109(2007)  
Chen, Z., et al. J. Biol. Chem. 281(18):12414-12420(2006)  
Ejtehad, H.D., et al. Ann. Rheum. Dis. 65(5):612-616(2006)  
Kawai-Yamada, M., et al. J. Biol. Chem. 280(47):39468-39473(2005)