

GTF2A1 Antibody (C-term)
Affinity Purified Rabbit Polyclonal Antibody (Pab)
Catalog # AP17659b

Specification

GTF2A1 Antibody (C-term) - Product Information

Application	WB,E
Primary Accession	P52655
Other Accession	O08949 , O99PM3 , NP_963889.1 , NP_056943.1
Reactivity	Human, Mouse
Predicted	Rat
Host	Rabbit
Clonality	Polyclonal
Isotype	Rabbit IgG
Calculated MW	41514
Antigen Region	297-326

GTF2A1 Antibody (C-term) - Additional Information

Gene ID 2957

Other Names

Transcription initiation factor IIA subunit 1, General transcription factor IIA subunit 1, TFIIAL, Transcription initiation factor TFIIA 42 kDa subunit, TFIIA-42, Transcription initiation factor IIA alpha chain, TFIIA p35 subunit, Transcription initiation factor IIA beta chain, TFIIA p19 subunit, GTF2A1, TF2A1

Target/Specificity

This GTF2A1 antibody is generated from rabbits immunized with a KLH conjugated synthetic peptide between 297-326 amino acids from the C-terminal region of human GTF2A1.

Dilution

WB~~1:1000
E~~Use at an assay dependent concentration.

Format

Purified polyclonal antibody supplied in PBS with 0.09% (W/V) sodium azide. This antibody is purified through a protein A column, followed by peptide affinity purification.

Storage

Maintain refrigerated at 2-8°C for up to 2 weeks. For long term storage store at -20°C in small aliquots to prevent freeze-thaw cycles.

Precautions

GTF2A1 Antibody (C-term) is for research use only and not for use in diagnostic or therapeutic procedures.

GTF2A1 Antibody (C-term) - Protein Information

Name GTF2A1

Synonyms TF2A1

Function TFIIA is a component of the transcription machinery of RNA polymerase II and plays an important role in transcriptional activation. TFIIA in a complex with TBP mediates transcriptional activity.

Cellular Location

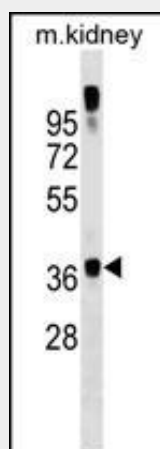
Nucleus.

GTF2A1 Antibody (C-term) - Protocols

Provided below are standard protocols that you may find useful for product applications.

- [Western Blot](#)
- [Blocking Peptides](#)
- [Dot Blot](#)
- [Immunohistochemistry](#)
- [Immunofluorescence](#)
- [Immunoprecipitation](#)
- [Flow Cytometry](#)
- [Cell Culture](#)

GTF2A1 Antibody (C-term) - Images



GTF2A1 Antibody (C-term) (Cat. #AP17659b) western blot analysis in mouse kidney tissue lysates (35ug/lane). This demonstrates the GTF2A1 antibody detected the GTF2A1 protein (arrow).

GTF2A1 Antibody (C-term) - Background

Accurate transcription initiation on TATA-containing class II genes involves the ordered assembly of RNA polymerase II (POLR2A; MIM 180660) and several general initiation factors (summarized by DeJong and Roeder, 1993 [PubMed 8224848]). One of these factors is TFIIA, which when purified from HeLa extracts consists of 35-, 19-, and 12-kD subunits.

GTF2A1 Antibody (C-term) - References

Huang, Y.W., et al. Oncol. Rep. 22(4):853-861(2009)
Vega, A., et al. Gynecol. Oncol. 112(1):210-214(2009)
Hieb, A.R., et al. J. Mol. Biol. 372(3):619-632(2007)
Lee, K.A., et al. Cytokine 38(2):96-100(2007)
Ewing, R.M., et al. Mol. Syst. Biol. 3, 89 (2007) :