

DACH1 Antibody (Center)
Affinity Purified Rabbit Polyclonal Antibody (Pab)
Catalog # AP17662C**Specification**

DACH1 Antibody (Center) - Product Information

Application	WB,E
Primary Accession	O9UI36
Other Accession	O9QYB2 , NP_542938.2 , NP_542937.2
Reactivity	Human, Mouse
Host	Rabbit
Clonality	Polyclonal
Isotype	Rabbit IgG
Calculated MW	78562
Antigen Region	270-297

DACH1 Antibody (Center) - Additional Information**Gene ID** 1602**Other Names**

Dachshund homolog 1, Dach1, DACH1, DACH

Target/Specificity

This DACH1 antibody is generated from rabbits immunized with a KLH conjugated synthetic peptide between 270-297 amino acids from the Central region of human DACH1.

Dilution

WB~~1:1000

E~~Use at an assay dependent concentration.

Format

Purified polyclonal antibody supplied in PBS with 0.09% (W/V) sodium azide. This antibody is purified through a protein A column, followed by peptide affinity purification.

Storage

Maintain refrigerated at 2-8°C for up to 2 weeks. For long term storage store at -20°C in small aliquots to prevent freeze-thaw cycles.

Precautions

DACH1 Antibody (Center) is for research use only and not for use in diagnostic or therapeutic procedures.

DACH1 Antibody (Center) - Protein Information**Name** DACH1**Synonyms** DACH

Function Transcription factor that is involved in regulation of organogenesis. Seems to be a regulator of SIX1, SIX6 and probably SIX5. Corepression of precursor cell proliferation in myoblasts by SIX1 is switched to coactivation through recruitment of EYA3 to the SIX1-DACH1 complex. Transcriptional activation also seems to involve association of CREBBP. Seems to act as a corepressor of SIX6 in regulating proliferation by directly repressing cyclin-dependent kinase inhibitors, including the p27Kip1 promoter (By similarity). Inhibits TGF-beta signaling through interaction with SMAD4 and NCOR1. Binds to chromatin DNA via its DACHbox-N domain (By similarity).

Cellular Location

Nucleus.

Tissue Location

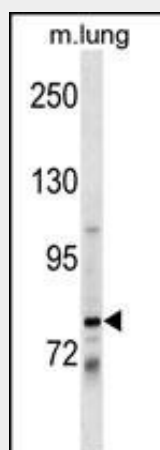
Widely expressed. Isoform 2 is found in brain, heart, kidney, liver, leukocytes and spleen. Isoform 3 is found in liver and heart. Isoform 4 is found in spleen

DACH1 Antibody (Center) - Protocols

Provided below are standard protocols that you may find useful for product applications.

- [Western Blot](#)
- [Blocking Peptides](#)
- [Dot Blot](#)
- [Immunohistochemistry](#)
- [Immunofluorescence](#)
- [Immunoprecipitation](#)
- [Flow Cytometry](#)
- [Cell Culture](#)

DACH1 Antibody (Center) - Images



DACH1 Antibody (Center) (Cat. #AP17662c) western blot analysis in mouse lung tissue lysates (35ug/lane). This demonstrates the DACH1 antibody detected the DACH1 protein (arrow).

DACH1 Antibody (Center) - Background

This gene encodes a chromatin-associated protein that associates with other DNA-binding transcription factors to regulate gene expression and cell fate determination during development. The protein contains a Ski domain that is highly conserved from

Drosophila to human. Expression of this gene is lost in some forms of metastatic cancer, and is correlated with poor prognosis. Multiple transcript variants encoding different isoforms have been found for this gene.

DACH1 Antibody (Center) - References

Bailey, S.D., et al. Diabetes Care (2010) In press :
Rose, J.E., et al. Mol. Med. 16 (7-8), 247-253 (2010) :
Kottgen, A., et al. Nat. Genet. 42(5):376-384(2010)
Zhou, J., et al. Proc. Natl. Acad. Sci. U.S.A. 107(15):6864-6869(2010)
Talmud, P.J., et al. Am. J. Hum. Genet. 85(5):628-642(2009)