

TOX4 Antibody (N-term)
Affinity Purified Rabbit Polyclonal Antibody (Pab)
Catalog # AP17670A**Specification**

TOX4 Antibody (N-term) - Product Information

Application	WB,E
Primary Accession	O94842
Other Accession	NP_055643.1
Reactivity	Human
Host	Rabbit
Clonality	Polyclonal
Isotype	Rabbit IgG
Calculated MW	66195
Antigen Region	172-199

TOX4 Antibody (N-term) - Additional Information**Gene ID** 9878**Other Names**

TOX high mobility group box family member 4, Epidermal Langerhans cell protein LCP1, TOX4, C14orf92, KIAA0737

Target/Specificity

This TOX4 antibody is generated from rabbits immunized with a KLH conjugated synthetic peptide between 172-199 amino acids from the N-terminal region of human TOX4.

Dilution

WB~~1:1000

Format

Purified polyclonal antibody supplied in PBS with 0.09% (W/V) sodium azide. This antibody is purified through a protein A column, followed by peptide affinity purification.

Storage

Maintain refrigerated at 2-8°C for up to 2 weeks. For long term storage store at -20°C in small aliquots to prevent freeze-thaw cycles.

Precautions

TOX4 Antibody (N-term) is for research use only and not for use in diagnostic or therapeutic procedures.

TOX4 Antibody (N-term) - Protein Information**Name** TOX4 ([HGNC:20161](#))**Synonyms** C14orf92, KIAA0737

Function Transcription factor that modulates cell fate reprogramming from the somatic state to the pluripotent and neuronal fate (By similarity). Component of the PTW/PP1 phosphatase complex, which plays a role in the control of chromatin structure and cell cycle progression during the transition from mitosis into interphase (PubMed:[20516061](#)). In liver, controls the expression of hormone-regulated gluconeogenic genes such as G6PC1 and PCK1. This regulation is independent of the insulin receptor activation (By similarity).

Cellular Location

Nucleus. Note=Associated with chromatin

Tissue Location

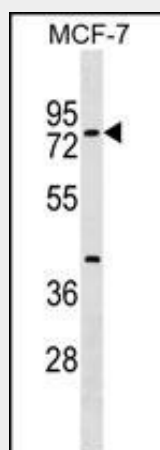
Expressed in liver (at protein level).

TOX4 Antibody (N-term) - Protocols

Provided below are standard protocols that you may find useful for product applications.

- [Western Blot](#)
- [Blocking Peptides](#)
- [Dot Blot](#)
- [Immunohistochemistry](#)
- [Immunofluorescence](#)
- [Immunoprecipitation](#)
- [Flow Cytometry](#)
- [Cell Culture](#)

TOX4 Antibody (N-term) - Images



TOX4 Antibody (N-term) (Cat. #AP17670a) western blot analysis in MCF-7 cell line lysates (35ug/lane). This demonstrates the TOX4 antibody detected the TOX4 protein (arrow).

TOX4 Antibody (N-term) - Background

TOX4 (TOX high mobility group box family member 4) contains 1 HMG box DNA-binding domain and the function remains unknown.

TOX4 Antibody (N-term) - References

Lee, J.H., et al. J. Biol. Chem. 285(32):24466-24476(2010)
Lee, S.J., et al. Exp. Mol. Med. 41(3):189-200(2009)

Olsen, J.V., et al. Cell 127(3):635-648(2006)
Lim, J., et al. Cell 125(4):801-814(2006)
Colland, F., et al. Genome Res. 14(7):1324-1332(2004)