

TBC1D10B Antibody (C-term)
Affinity Purified Rabbit Polyclonal Antibody (Pab)
Catalog # AP17678b

Specification

TBC1D10B Antibody (C-term) - Product Information

| | |
|-------------------|-----------------------------|
| Application | WB,E |
| Primary Accession | Q4KMP7 |
| Other Accession | NP_056342.3 |
| Reactivity | Human |
| Host | Rabbit |
| Clonality | Polyclonal |
| Isotype | Rabbit IgG |
| Calculated MW | 87199 |
| Antigen Region | 781-808 |

TBC1D10B Antibody (C-term) - Additional Information

Gene ID 26000

Other Names

TBC1 domain family member 10B, Rab27A-GAP-beta, TBC1D10B

Target/Specificity

This TBC1D10B antibody is generated from rabbits immunized with a KLH conjugated synthetic peptide between 781-808 amino acids from the C-terminal region of human TBC1D10B.

Dilution

WB~~1:1000

Format

Purified polyclonal antibody supplied in PBS with 0.09% (W/V) sodium azide. This antibody is purified through a protein A column, followed by peptide affinity purification.

Storage

Maintain refrigerated at 2-8°C for up to 2 weeks. For long term storage store at -20°C in small aliquots to prevent freeze-thaw cycles.

Precautions

TBC1D10B Antibody (C-term) is for research use only and not for use in diagnostic or therapeutic procedures.

TBC1D10B Antibody (C-term) - Protein Information

Name TBC1D10B

Function Acts as a GTPase-activating protein for RAB3A, RAB22A, RAB27A, and RAB35. Does not act on RAB2A and RAB6A.

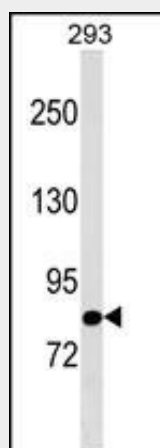
Cellular Location

Cytoplasm. Cell membrane. Note=Predominantly localizes near the plasma membrane (PubMed:16923811). In melanocytes, located at the periphery of cells (PubMed:16923811)

TBC1D10B Antibody (C-term) - Protocols

Provided below are standard protocols that you may find useful for product applications.

- [Western Blot](#)
- [Blocking Peptides](#)
- [Dot Blot](#)
- [Immunohistochemistry](#)
- [Immunofluorescence](#)
- [Immunoprecipitation](#)
- [Flow Cytometry](#)
- [Cell Culture](#)

TBC1D10B Antibody (C-term) - Images

TBC1D10B Antibody (C-term) (Cat. #AP17678b) western blot analysis in 293 cell line lysates (35ug/lane). This demonstrates the TBC1D10B antibody detected the TBC1D10B protein (arrow).

TBC1D10B Antibody (C-term) - Background

Small G proteins of the RAB family (see MIM 179508) function in intracellular vesicle trafficking by switching from the GTP-bound state to the GDP-bound state with the assistance of guanine nucleotide exchange factors (GEFs; see MIM 609700) and GTPase-activating proteins (GAPs). TBC1D10B functions as a GAP for several proteins of the Rab family (Ishibashi et al., 2009 [PubMed 19077034]).

TBC1D10B Antibody (C-term) - References

Ishibashi, K., et al. Genes Cells 14(1):41-52(2009)
Choy, K.W., et al. Physiol. Genomics 25(1):9-15(2006)
Beausoleil, S.A., et al. Proc. Natl. Acad. Sci. U.S.A. 101(33):12130-12135(2004)