

**ARGFX Antibody (Center)**  
**Affinity Purified Rabbit Polyclonal Antibody (Pab)**  
**Catalog # AP17681C****Specification**

---

**ARGFX Antibody (Center) - Product Information**

Application	IF, WB,E
Primary Accession	<a href="#">A6NJG6</a>
Other Accession	<a href="#">NP_001012677.1</a>
Reactivity	Human
Host	Rabbit
Clonality	Polyclonal
Isotype	Rabbit IgG
Calculated MW	35617
Antigen Region	103-132

**ARGFX Antibody (Center) - Additional Information****Gene ID** 503582**Other Names**

Arginine-fifty homeobox, ARGFX

**Target/Specificity**

This ARGFX antibody is generated from rabbits immunized with a KLH conjugated synthetic peptide between 103-132 amino acids from the Central region of human ARGFX.

**Dilution**

IF~~1:10~50

WB~~1:1000

E~~Use at an assay dependent concentration.

**Format**

Purified polyclonal antibody supplied in PBS with 0.09% (W/V) sodium azide. This antibody is purified through a protein A column, followed by peptide affinity purification.

**Storage**

Maintain refrigerated at 2-8°C for up to 2 weeks. For long term storage store at -20°C in small aliquots to prevent freeze-thaw cycles.

**Precautions**

ARGFX Antibody (Center) is for research use only and not for use in diagnostic or therapeutic procedures.

**ARGFX Antibody (Center) - Protein Information****Name** ARGFX ([HGNC:30146](#))

**Function** Transcription factor that acts as activator.

**Cellular Location**

Nucleus {ECO:0000255|PROSITE-ProRule:PRU00108}.

**Tissue Location**

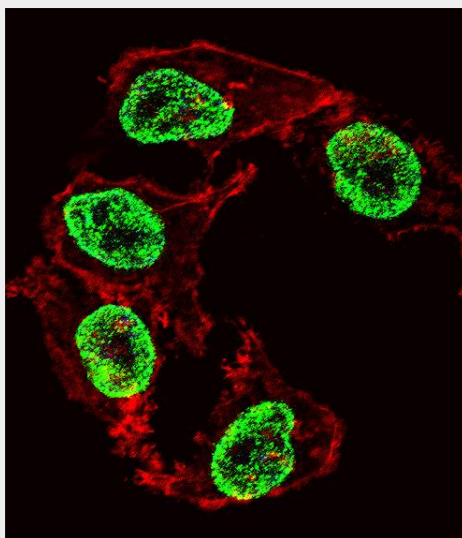
Expressed at low level in testis and undifferentiated embryonic stem cells.

**ARGFX Antibody (Center) - Protocols**

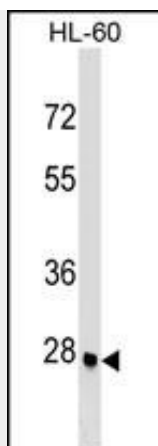
Provided below are standard protocols that you may find useful for product applications.

- [Western Blot](#)
- [Blocking Peptides](#)
- [Dot Blot](#)
- [Immunohistochemistry](#)
- [Immunofluorescence](#)
- [Immunoprecipitation](#)
- [Flow Cytometry](#)
- [Cell Culture](#)

**ARGFX Antibody (Center) - Images**



Fluorescent confocal image of HepG2 cell stained with ARGFX Antibody (Center)(Cat#AP17681c).HepG2 cells were fixed with 4% PFA (20 min), permeabilized with Triton X-100 (0.1%, 10 min), then incubated with ARGFX primary antibody (1:25, 1 h at 37°C). For secondary antibody, Alexa Fluor® 488 conjugated donkey anti-rabbit antibody (green) was used (1:400, 50 min at 37°C).Cytoplasmic actin was counterstained with Alexa Fluor® 555 (red) conjugated Phalloidin (7units/ml, 1 h at 37°C). Nuclei were counterstained with DAPI (blue) (10 µg/ml, 10 min). ARGFX immunoreactivity is localized to Nucleus significantly.



ARGFX Antibody (Center) (Cat. #AP17681c) western blot analysis in HL-60 cell line lysates (35ug/lane). This demonstrates the ARGFX antibody detected the ARGFX protein (arrow).

#### **ARGFX Antibody (Center) - Background**

Homeobox genes encode DNA-binding proteins, many of which are thought to be involved in early embryonic development. Homeobox genes encode a DNA-binding domain of 60 to 63 amino acids referred to as the homeodomain. This gene is a member of the ARGFX homeobox gene family.

#### **ARGFX Antibody (Center) - References**

Booth, H.A., et al. Gene 387 (1-2), 7-14 (2007) :